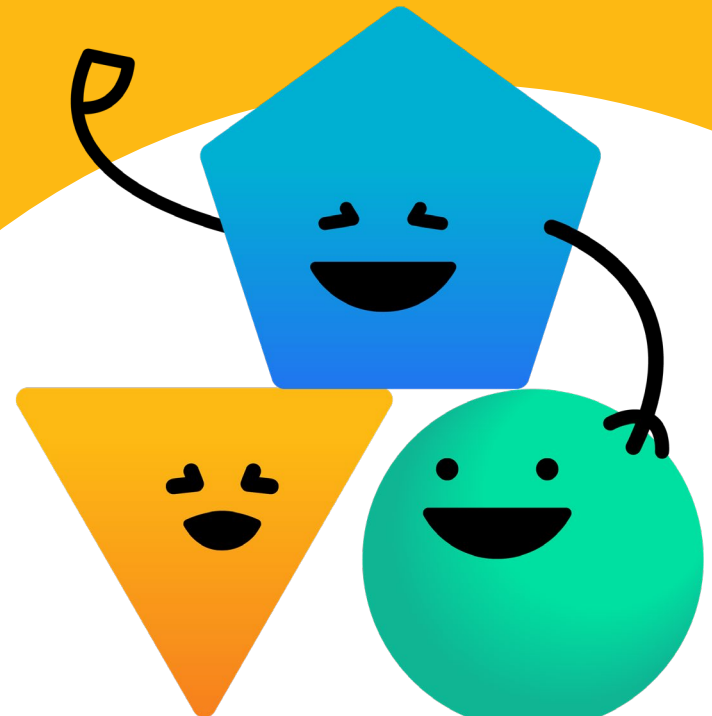
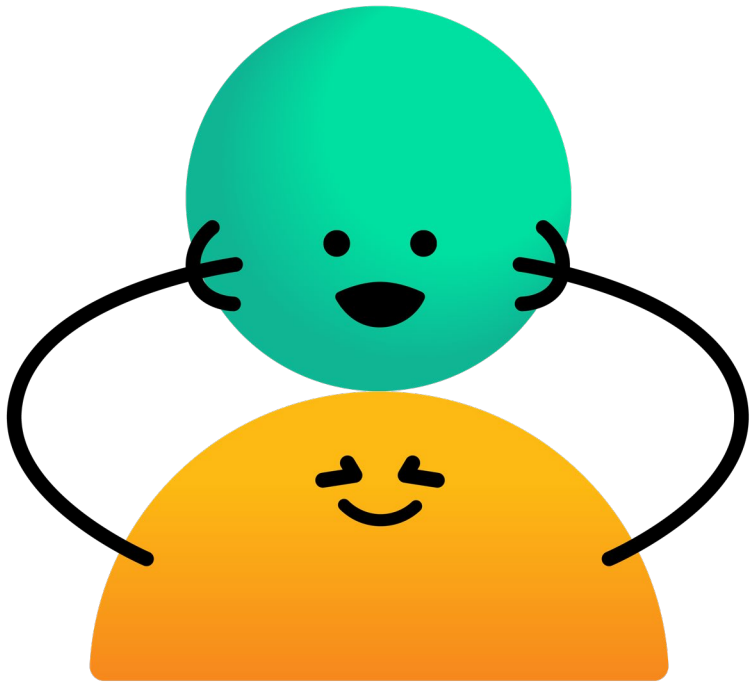


Your Writable Guided Tour

2022-23 School Year





Welcome!

This guided tour will help you explore Writable as you get started on your journey to growing great writers. If you have any questions, please don't hesitate to reach out to your local HMH® contact or [click here](#).

What is Writable?

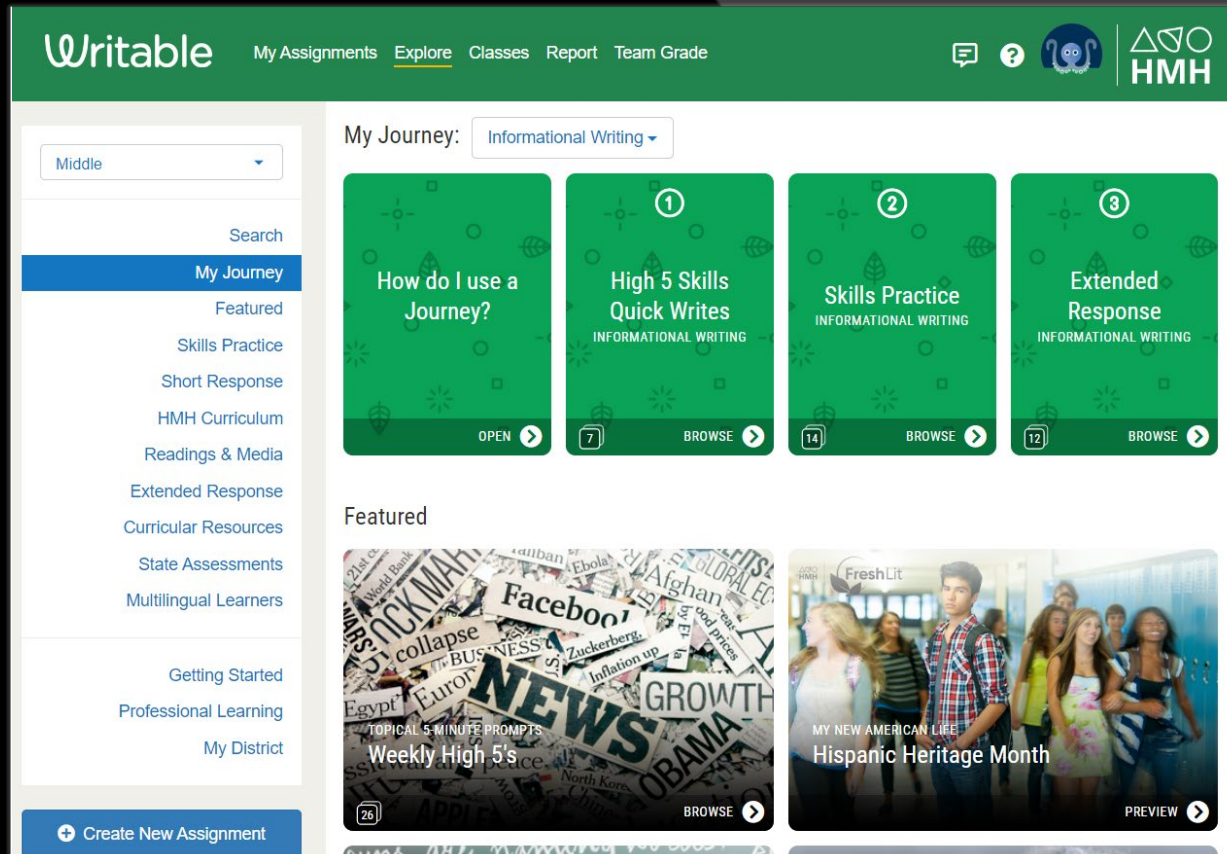


Writable® makes it easy to provide powerful writing practice to every student, every day in **Grades 3-12**.

Teachers: Save time on prep and grading as you motivate and scaffold writers.

Administrators: Unify literacy instruction and assessment around state and district goals.

Students: Become more purposeful, proficient writers through timely feedback and revision.



On Ed, the HMH Learning Platform

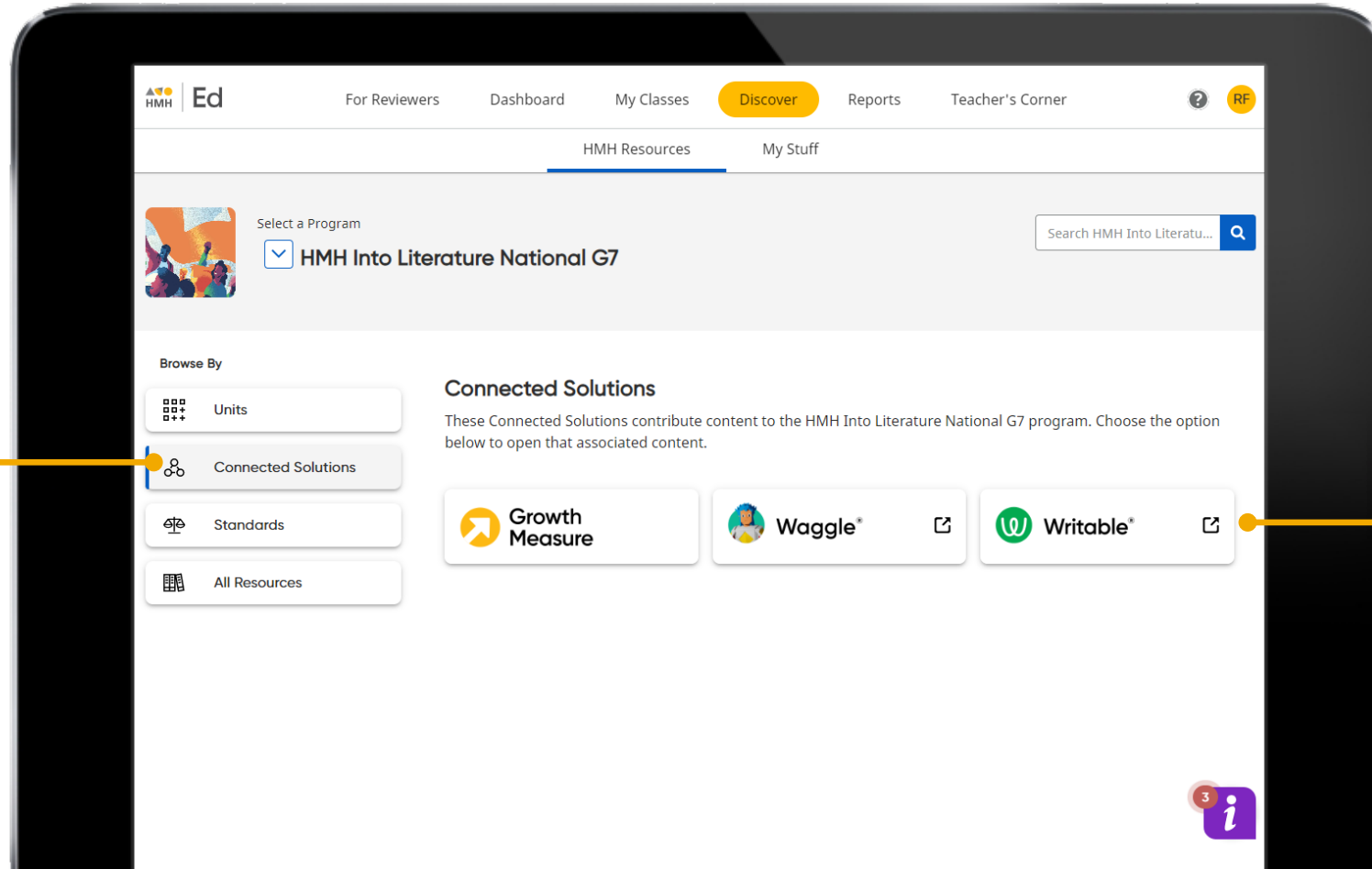


Discover Everything in One Place!

Dive into resources for whole-class instruction, small-group rotations, or independent practice. Learn how to use your materials at your own pace.

Find Clear Alignment

Writable automatically connects with HMH core instruction, saving you time aligning practice to the topics and skills taught in whole class instruction.



Embark on Writing Growth

In one click, you're on your way to giving students the level of writing practice and support that's exactly right for them.

Writable Explore

Continue to
**My
Assignments**



Align to Your Learning Goals

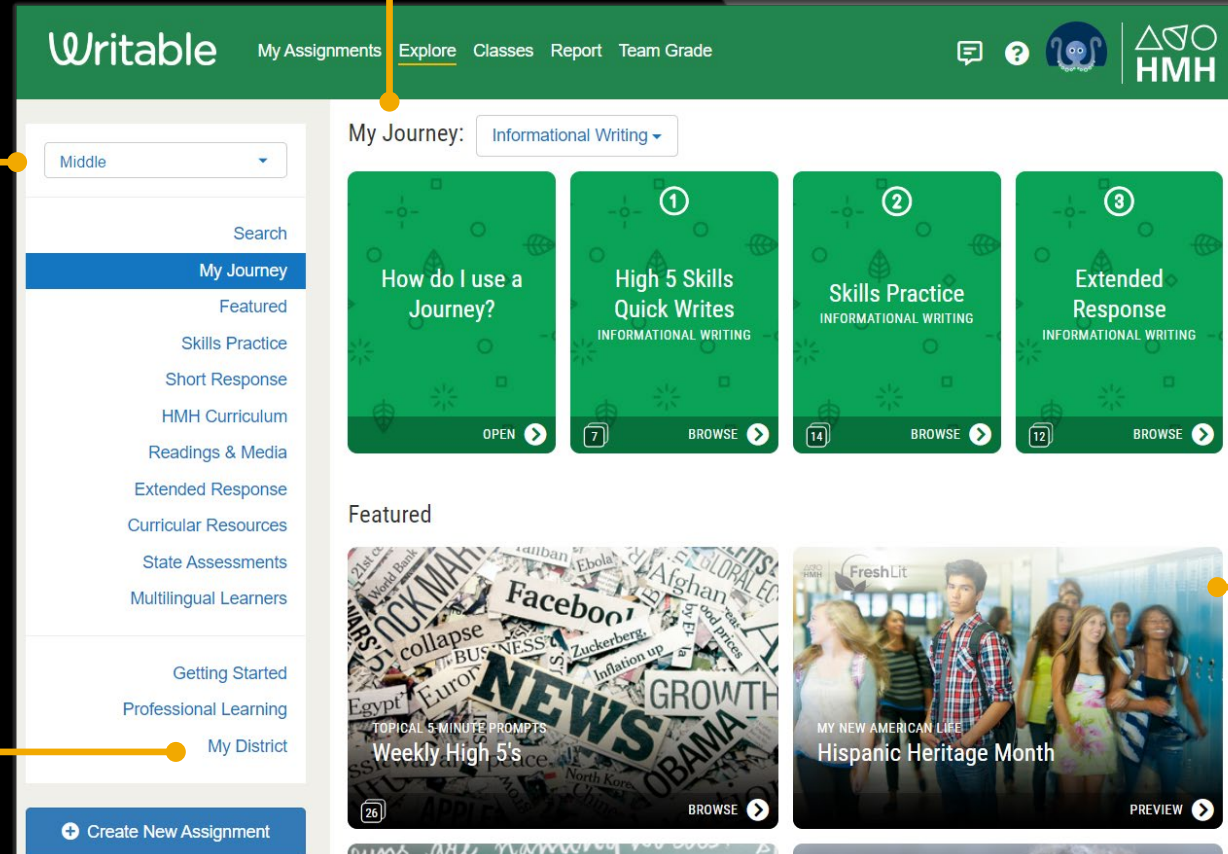
Choose a "Journey," and Writable recommends skill-aligned assignments to reinforce your teaching.

Access Over 1,000 Practice Items

Fully customizable assignments, prompts, and rubrics organized by grade band offer a variety of scaffolded practice for all skill levels.

Create and Share Assignments

Add reading passages, graphic organizers, shared district rubrics, and more! District or school-level teams can always distribute aligned assignments and assessments.



Quickly View Assignment Details

Click on a Collection tile to open and browse individual assignments. Once in the Collection, click any Assignment tile to display details and to preview as a student.

My Assignments



Manage Your Assignments

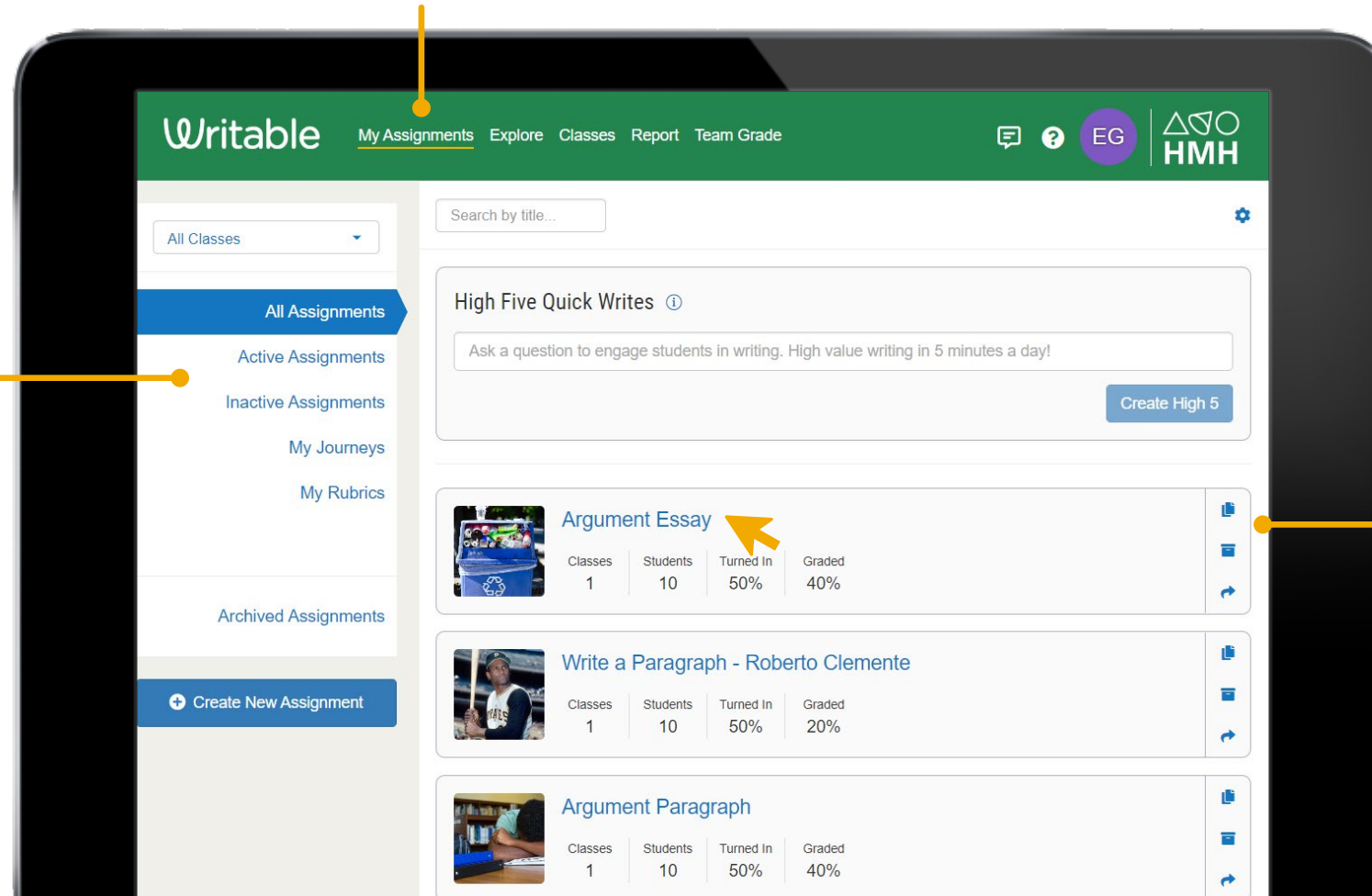
Plan, organize, edit, share,
assign – and monitor student
progress – all from one screen.

Expedite Planning and Assigning

Find assignments
already assigned
to students under
"Active
Assignments."

Edit and prep
before assigning
by viewing your
"Inactive
Assignments."

All your Journeys
and Rubrics are
conveniently
preserved for
anytime access.



Control Each Assignment with a Single View

Click on any assignment
title to Edit, Preview, or
Assign and to view its
Assignment Dashboard.

The three icons on the right-
side panel allow you to
Duplicate, Archive, or Share
the assignment.

Writable Assignment Dashboard

Continue to
Assignment
Dashboard



Argument Essay

Currently assigned to 1 class.

[Team Grade](#) | [More](#)

[Edit](#)

[Preview](#)

[Assign](#)

[Demo 3rd Period ELA](#)

Assigned Oct 26, 2022

Active Options: Peer Review, Self Review, RevisionAid, Originality Check, GrammarAid

Students	Turned In	Graded
10	50%	20%



Access At-a-Glance Feedback

Save grading time by showing all types of feedback on student writing in one screen.

Intervene at the Right Moment

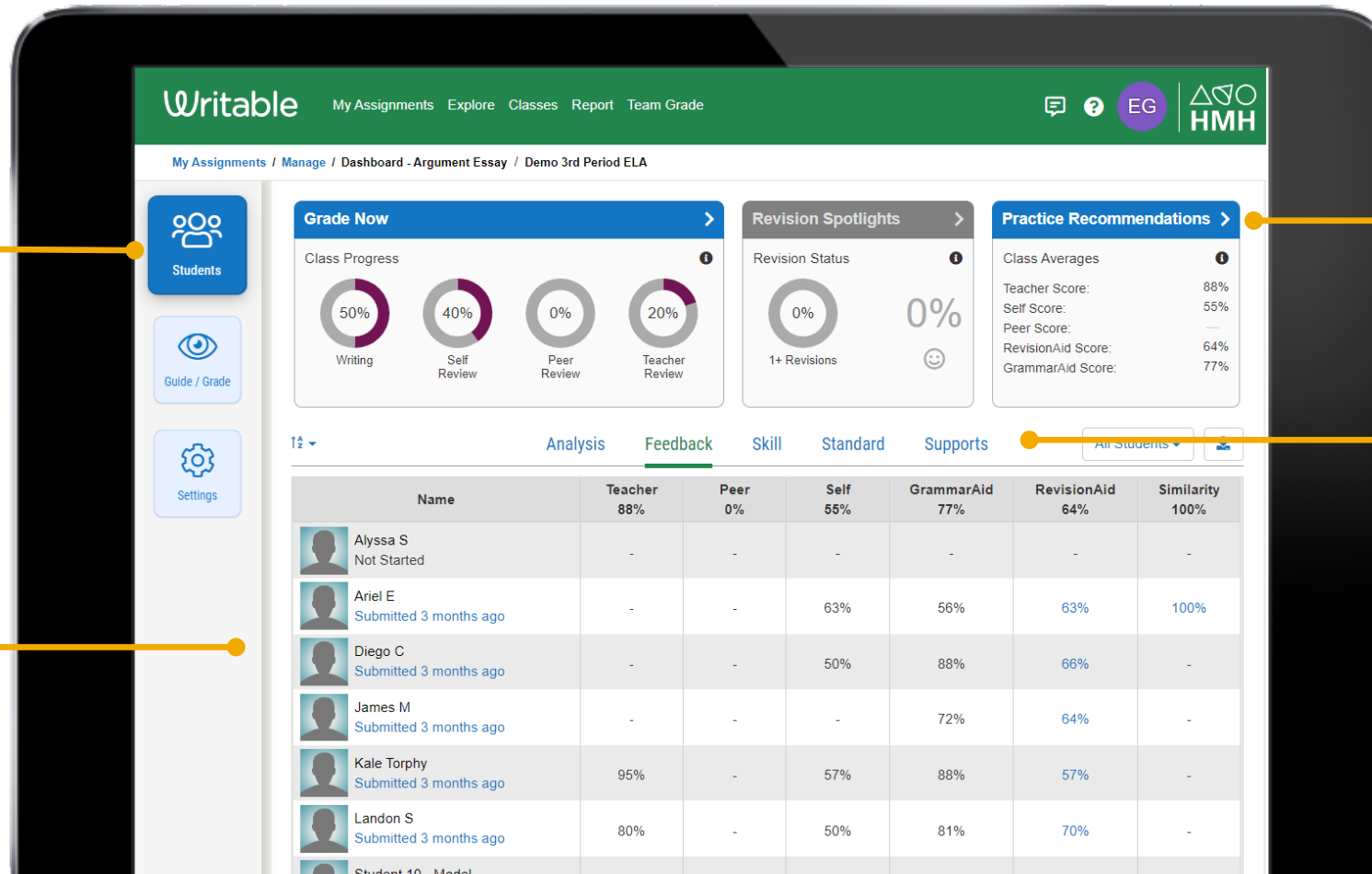
Provide timely feedback and intervention by quickly seeing which students are "On Target" and who is "On Watch."

Find Data-Informed Next Steps

Promote writing growth by assigning suggested practice tailored to each student's skill level.

Choose a View to Monitor Progress

Quickly gain insights into student and class performance on the assignment. Choose between Feedback, Skill, and Standard views.



Writable Assignment Dashboard

Continue to
**Growth
Report**



Argument Essay

Currently assigned to 1 class.

[Team Grade](#) | [More](#) ▾

Edit

Preview

Assign

Demo 3rd Period ELA

Assigned Oct 26, 2022

Active Options: Peer Review, Self Review, RevisionAid, Originality Check, GrammarAid

Students	Turned In	Graded
10	50%	20%



Access One Screen for All Responses

Differentiate by selecting a sub-group of students to view their work.

Provide Feedback Sooner

Conference with a group or individual students to guide live writing, before it's submitted.

Writable My Assignments Explore Classes Report Team Grade

My Assignments / Manage / Dashboard - Argument Essay / Demo 3rd Period ELA

Students

Guide / Grade

Settings

Write Extended Response Active Students ▾

Ariel E Submitted 3 months ago GrammarAid

Plants need sun and water to grow. Then when they grow they release oxygen. The problem is that not enough people are connected or respect nature. It's important to be connected to nature because it helps have a cleaner planet and have better mental health.

It's important to respect nature since it helps us have a cleaner planet. In the source Never Retreat It said that fossil fuels were one of the main reasons to the earths pollution. Most of the stuff we use has had fossil fuel help in the production. Also in the story Mississippi Solo The narrator respected nature, and the river told him to get ready a storm was coming.

Being connected with nature is great for mental health. In the story Mississippi Solo the guy said that he goes out into nature when he is tired of everything and needs a break. Nature also helps with thinking, in the story Allied With Green the girl said that she get ideas when trimming her plants. Nature helps with relaxation and ideas.

Teacher — Self 63% Peer — Review this submission >

Send a message to Ariel E...

Diego C Submitted 3 months ago GrammarAid

Imagine it's a sunny day and your in nature and your letting all your problems go away. Nature isn't always on your side an example is in "Mississippi solo". To be in harmony with nature means to be at peace and a feeling of safety.

Watch for Grammar

Automated grammar scores and grammar errors are available for every student response.

Enter Full Grading View

Gain access to all grading features, including audio/video feedback and comments color-coded to rubric items for clear revision guidance.



Growth Report



Benchmark and Track, No Testing Required

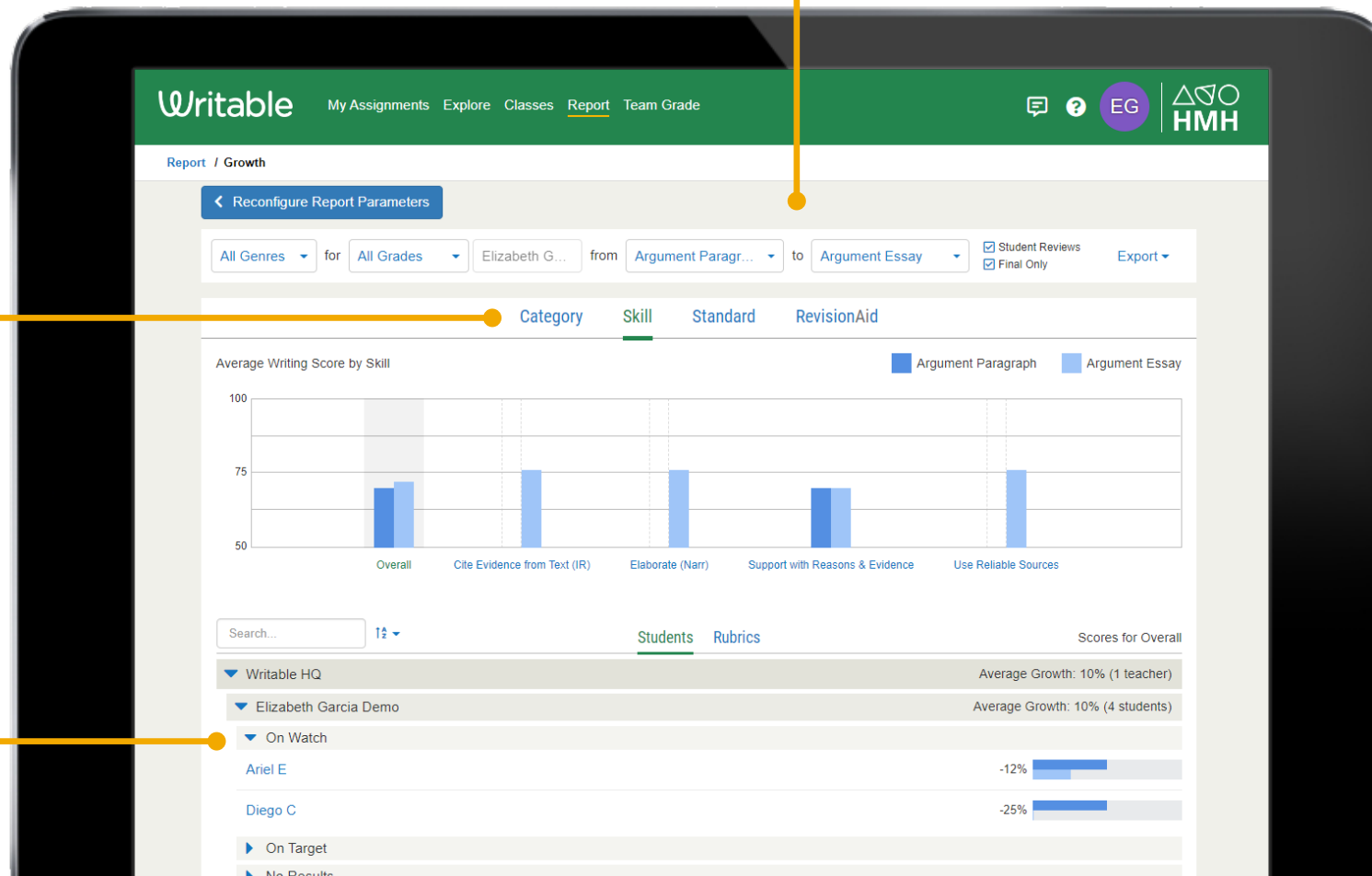
Compare data between two assignments or assessments to easily monitor student growth.

Form a Full Picture of Growth

Access results by overall assignment, category, skill, or standard to better understand knowledge, growth, and skills gaps.

View Areas of Improvement

Explore students who are "On Watch" or "On Target" and view scores by Student or by Rubric.

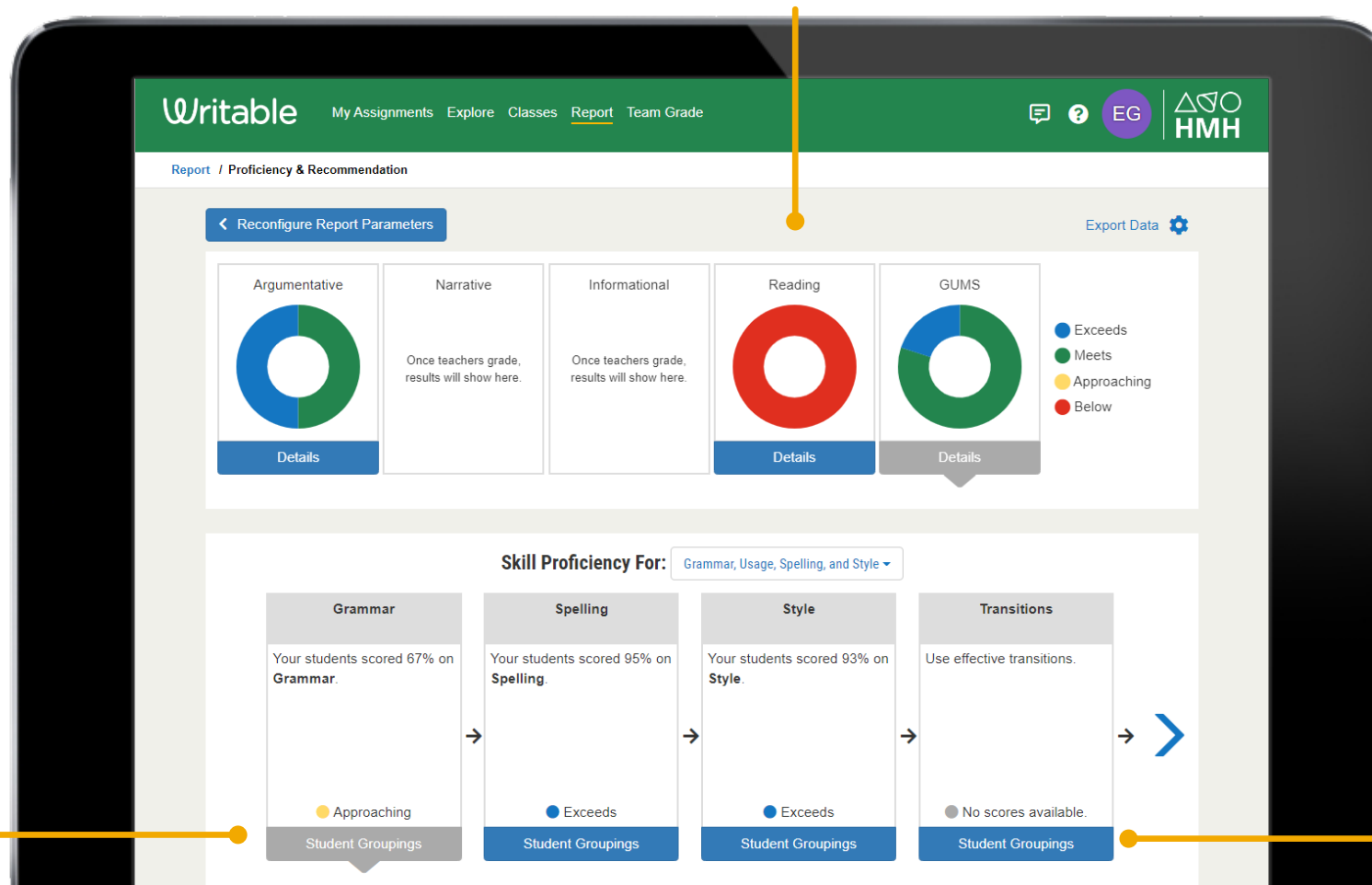


Proficiency Report



Easily Gauge Proficiency

View a class's proficiency in reading, grammar, and three key writing modes.



Explore Next Steps

Access data-informed assignment recommendations that build skill mastery.

Differentiate by Skill Level

Use proficiency data to form differentiated writing groups.

Writable

Student Writing

Continue to
**Try it
Yourself**



Respond to Texts and Media

Get students excited to write about topics they care about! Writable assignments integrate current event articles and media clips for timely practice items.

Writable

Assignments / Dashboard / Choose Prompt / Write

★ RevisionAid Originality Check

Are we Living in the Plastic Age?

ARGUMENT ESSAY

Using ideas, information, and examples from multiple texts, write an Argumentative Essay for a local or school newspaper supporting or questioning one change happening in nature.

Be sure to:

- clearly state your claim.
- use and cite supporting evidence from multiple sources.
- use transitions effectively.

WRITE

Start writing...

Check & Submit

Guide Writing Earlier

Decide whether students have access to automated feedback on structure, organization, originality, and grammar during the writing process.

Access Self-Review

Students use the assignment rubric as a "check list" on their writing before submitting.

Writing for Success

Support students of all levels by allowing for audio or video submissions, image uploads, and Google docs integration.

Try it Yourself

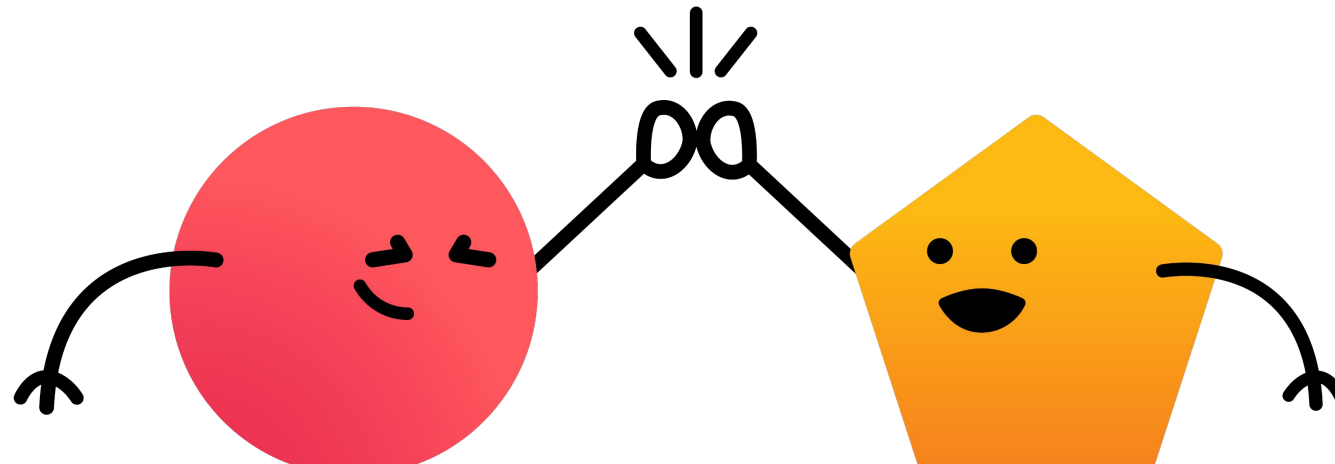
Continue to
Learn More
about
Writable!



Preview an assignment:

- [Argument Paragraph](#)
- [Argument Essay](#)
- [Write a Paragraph – Roberto Clemente](#)

After previewing, login or create an account to view full teacher functionality.



Thank you for visiting!

Learn more at
hmhco.com/writable

//CODiE//
2022 SIIA CODiE WINNER



//CODiE//
2020 SIIA CODiE WINNER

