



# Embedded

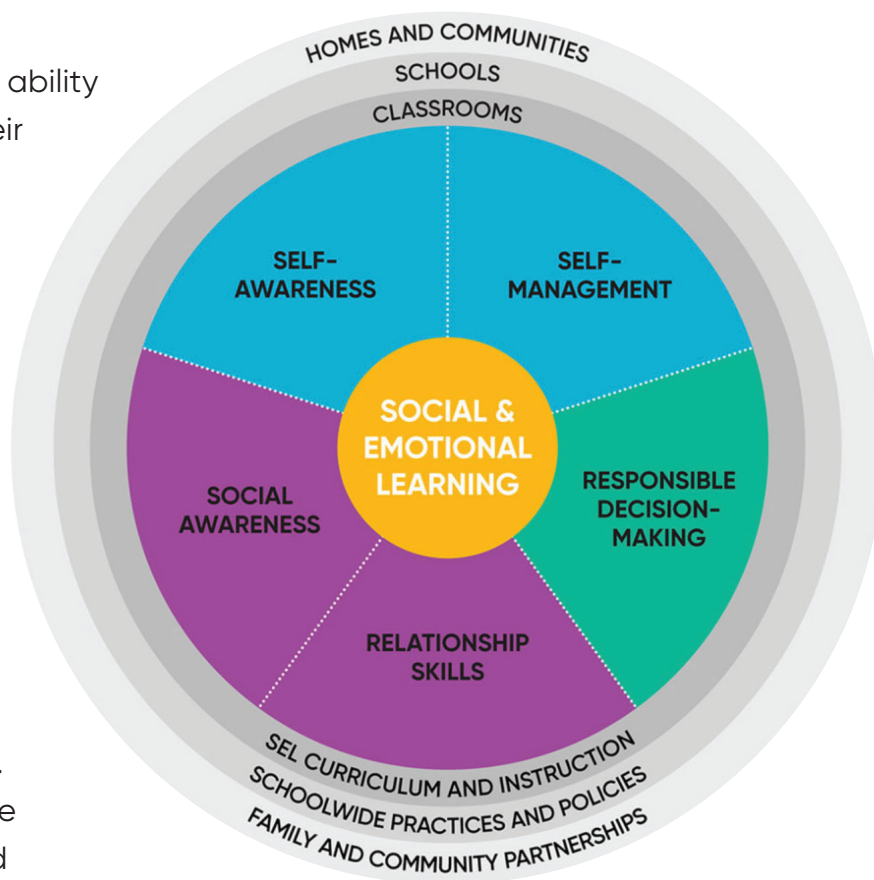
## Social-Emotional Learning

Many children will come to school this year with increasing social and emotional issues. Help your students develop the strategies and skills they need to excel both academically and socially during the year.

### SEL Core Competencies

Learning goes beyond students' ability to acquire facts and expand their knowledge. It is an intellectual, social, and emotional process that involves focusing on the whole child.

Social-Emotional Learning (SEL) is the process through which students understand and manage their emotions, set positive goals, feel and show empathy, establish and maintain positive relationships, and make responsible decisions. *HMH Into Reading* focuses on the core competencies of social and emotional learning developed by the Collaborative for Academic, Social, and Emotional Learning (CASEL).

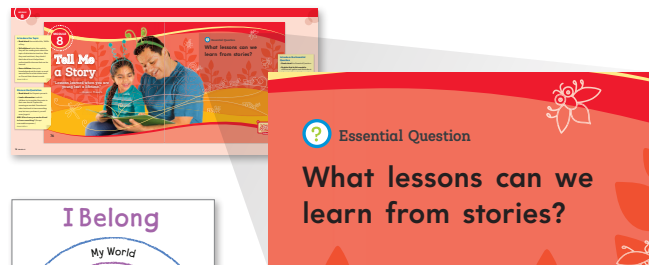


Credit: CASEL, 2017

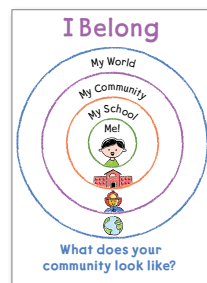
## SEL in the Curriculum

Research indicates that integrating SEL into the daily curriculum and the classroom culture is most effective. This practice fosters transfer of skills because students consistently practice them over time. *Into Reading* focuses on the core SEL competencies through the following program features:

- **Essential Questions:** Each module begins with an Essential Question that helps promote discussion around topics that matter to students and encourage SEL development.



- **SEL Anchor Charts and Lessons:** Display engaging Anchor Charts to introduce a competency and implement related activities.



- **Connect to Literature:** In the Teaching Pal, look for connections and prompts to discuss the module focus competency through a text.

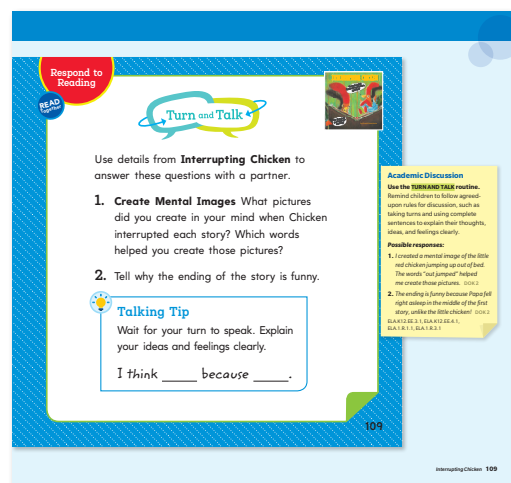


### SOCIAL AND EMOTIONAL LEARNING

#### Self-Management

**Reinforce** the key messages about **self-management** by discussing these questions after reading the text.

**ASK:** How do you feel when someone interrupts you? What are some ways to be a good listener?



- **Inquiry and Research Project:** As students work together on a module Inquiry and Research Project, highlight connections to the Relationship Skills competency.
- **Engagement Routines:** Routines such as Think-Pair-Share and Turn and Talk embedded throughout the program promote the Relationship Skills competency.

To learn more about *HMH Into Reading*, please visit

[hmhco.com/intoreading](http://hmhco.com/intoreading)

HMH Into Reading®, Houghton Mifflin Harcourt®, HMH®, and The Learning Company® are registered trademarks of Houghton Mifflin Harcourt. © Houghton Mifflin Harcourt. All rights reserved. 08/20 WF1185914rev



**Houghton Mifflin Harcourt.**  
The Learning Company®

**hmhco.com**