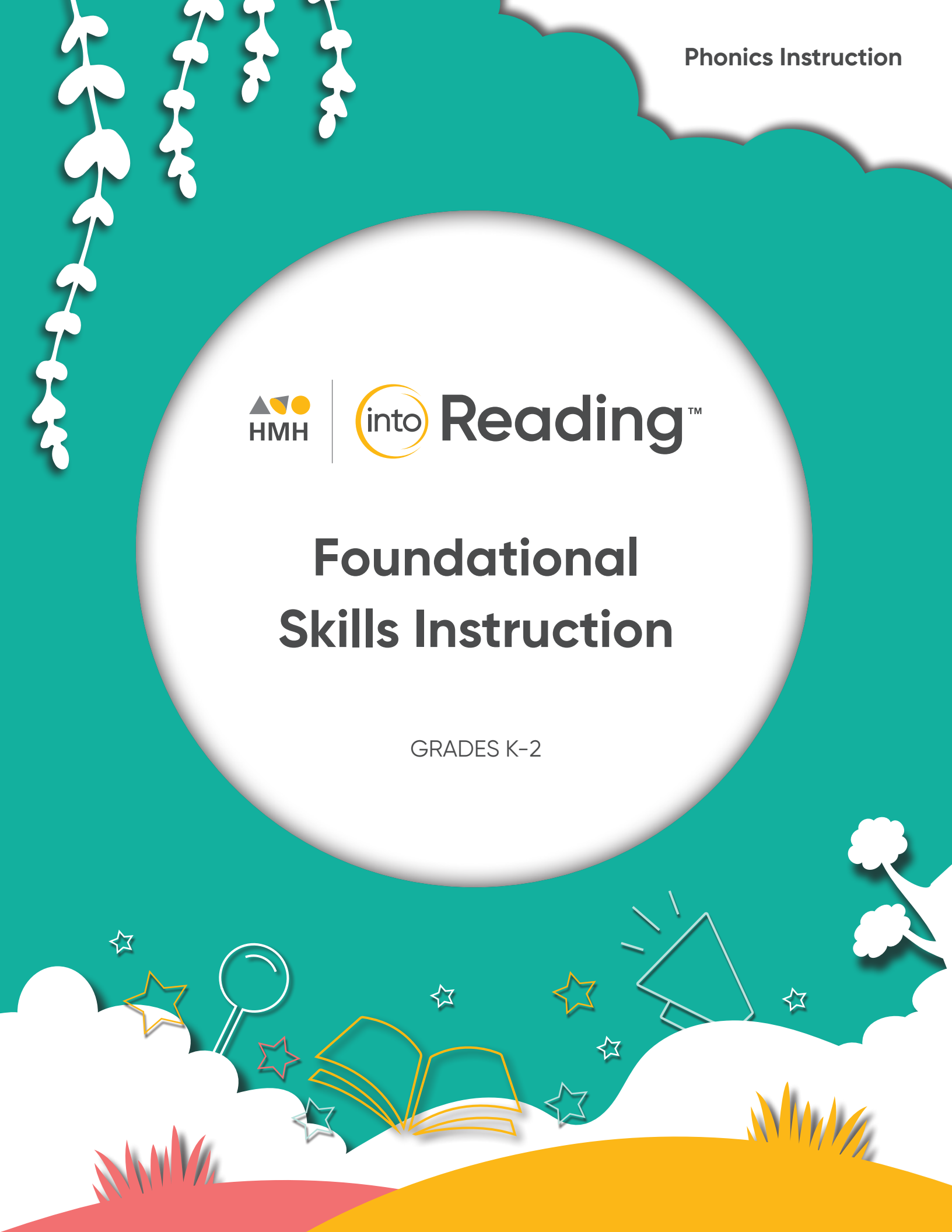
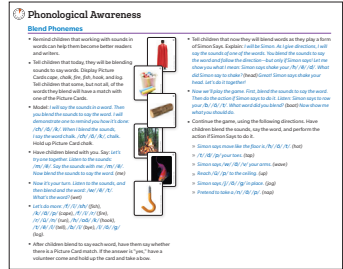
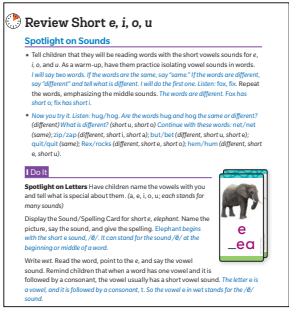
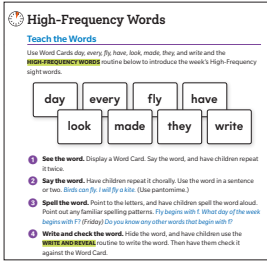
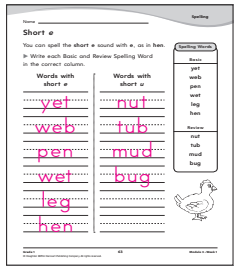
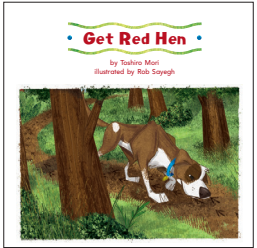


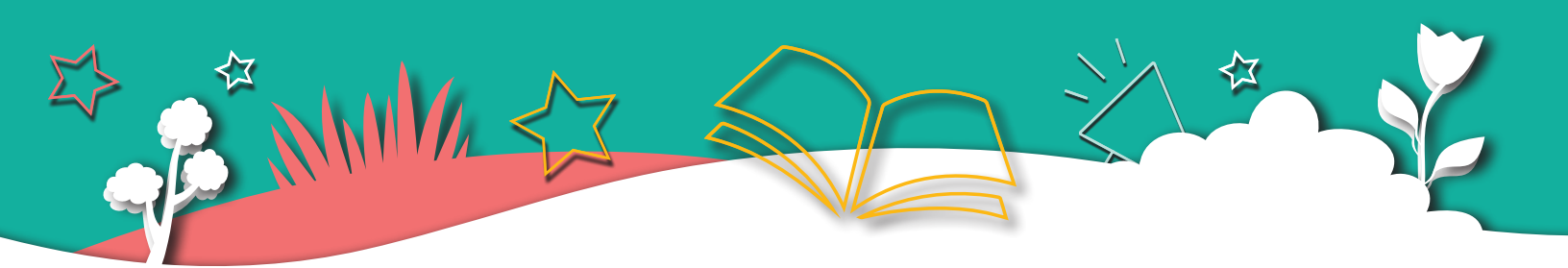


# Foundational Skills Instruction

GRADES K-2



Daily Lesson Components	Lesson Support(s)	Lesson Sequence Preview
<p><b>Develop Phonemic Awareness</b></p> <p><i>HMH Into Reading</i> provides explicit teaching of the speech sounds, distinct from the letters that represent them; attention is called to sound and word pronunciation with emphasis on blending and separating sounds in spoken words.</p>	<ul style="list-style-type: none"> <li>Built-In, Research-Based Instructional Routines:                             <ul style="list-style-type: none"> <li>Blending</li> <li>Sound-by-Sound</li> <li>Continuous</li> <li>Vowel First</li> <li>Segmentation</li> </ul> </li> <li>Differentiated Practice Activities</li> <li>Articulation Videos</li> <li>Alphafriends® (Cards, Songs, Videos)</li> <li>Correct and Redirect Tips</li> </ul>	
<p><b>Phonics</b></p> <p><i>HMH Into Reading</i> provides explicit and systematic instruction of phoneme-grapheme (sound-symbol) correspondences.</p> <ul style="list-style-type: none"> <li>Sound/Spelling Connection</li> <li>Blending/Decoding Practice</li> </ul>	<ul style="list-style-type: none"> <li>Built-In, Research-Based Instructional Routines</li> <li>Gradual Release Model                             <ul style="list-style-type: none"> <li>I Do It, We Do It, You Do It</li> </ul> </li> <li>Multi-Sensory Instruction Methods                             <ul style="list-style-type: none"> <li>Letter cards manipulation</li> <li>Modeling blending sounds with finger-movement</li> </ul> </li> <li>Ready-made Projectable Word Lists</li> </ul>	
<p><b>High-Frequency Words</b></p> <p><i>HMH Into Reading</i> directly teaches students to recognize and spell high-frequency words quickly so they can focus on understanding what they are reading.</p>	<ul style="list-style-type: none"> <li>Built-In, Research-Based Instructional Routines                             <ul style="list-style-type: none"> <li>High-Frequency Words</li> <li>Write and Reveal</li> <li>Words to Know</li> </ul> </li> <li>High-Frequency Word Cards</li> <li>Differentiated Practice Activities                             <ul style="list-style-type: none"> <li>Decodable Readers</li> <li>Printable Games</li> <li>Word Sorts</li> <li>Practice Pages</li> </ul> </li> </ul>	
<p><b>Work with Words</b></p> <p><i>HMH Into Reading</i> builds transfer of skill knowledge by having students practice building, manipulating, and sorting words.</p> <ul style="list-style-type: none"> <li>Independent Decoding/Encoding Practice</li> </ul>	<ul style="list-style-type: none"> <li>Weekly Spelling Lists mirror the phonics skills being taught</li> <li>Teachers and students are provided with a wide variety of independent skill practice options</li> </ul>	
<p><b>Application to Decodable Text</b></p> <p><i>HMH Into Reading</i> reinforces phonics skills through our Start Right Reader (Decodable Texts) lessons in the primary grades.</p>	<ul style="list-style-type: none"> <li>2-4 Decodable texts a week Grades K-2 connected to the weekly topic provide:                             <ul style="list-style-type: none"> <li>Phonics Skill Review</li> <li>Blending Practice</li> <li>High-Frequency Words</li> <li>Reread and Comprehension/Response</li> <li>Word Work Activities</li> </ul> </li> </ul>	



# HMH Into Reading's Foundational Skills Instruction

*HMH Into Reading™* incorporates the most recent reading research for systematic and explicit foundational skills instruction. The foundational skills lessons follow a scope and sequence based on evidence from research, providing a systematic approach. The explicit instruction includes teacher explanation and modeling, including the Gradual Release Model: *I Do It, We Do It, You Do It*. The instruction is delivered with small-group support for differentiation targeted to each students' learning needs.

In *HMH Into Reading*, the systematic, explicit phonics instruction; rich, authentic texts; small-group instruction; and ample independent opportunities for practice and application provide with the research-based instruction, resources, and routines to ensure successful foundational skills development.

## Instructional Support Resources



### Alphafriends

Play the **Alphafriends Videos** to engage children in connecting letters and sounds through songs. Children can revisit the videos during literacy centers or beyond the classroom.

- 31 videos total: 21 consonants, 5 short vowels and 5 long vowels
- Show **Alphafriends Cards** to introduce new sound-spellings
- 31 large cards for introductions and to display in the classroom
- 31 small cards for pocket-chart activities and small-group instruction
- Front side features the Alphafriend and letter; back side shows only the Alphafriend Printable
- **Printable Alphafriends song lyrics** are also available online

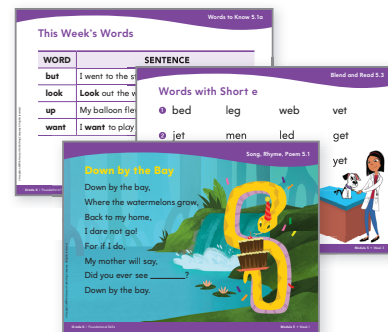


### Display and Engage

Project **Display and Engage** during lessons to:

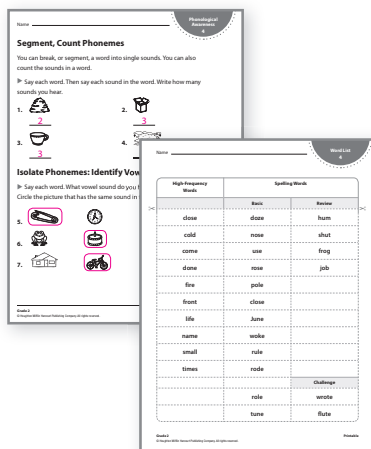
- Provide context sentences for high-frequency words
- Practice reading high-frequency words with automaticity
- Lead children in decoding words with focus sound-spellings
- Apply phonological awareness skills using rhymes, poems, and songs

**Songs, Rhymes, and Poems** are also available as printable resources for children to follow along or mark up in class





# Instructional Support Resources, continued



## Printable Resources

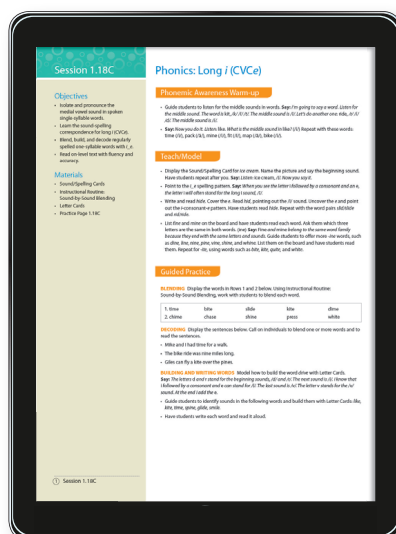
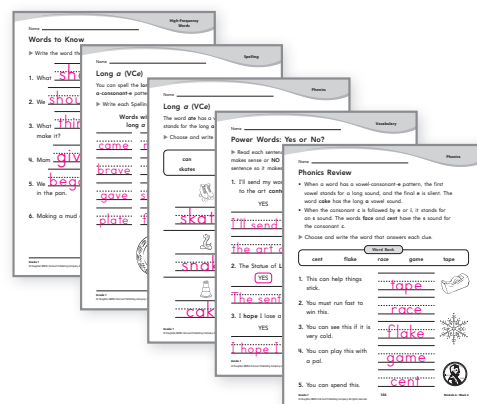
Access **Printable Resources** online to differentiate instruction, provide additional practice, or supplement the foundational skills lessons in the Teacher's Guides.

- Word Lists contain word cards for each week's high-frequency words and spelling words for children to use in practice activities.
- Provide additional practice for phonological awareness skills.
- Use the Handwriting printable resources for handwriting practice—models are available for manuscript and continuous stroke in both grades and for cursive in Grade 2.



## Know It, Show It

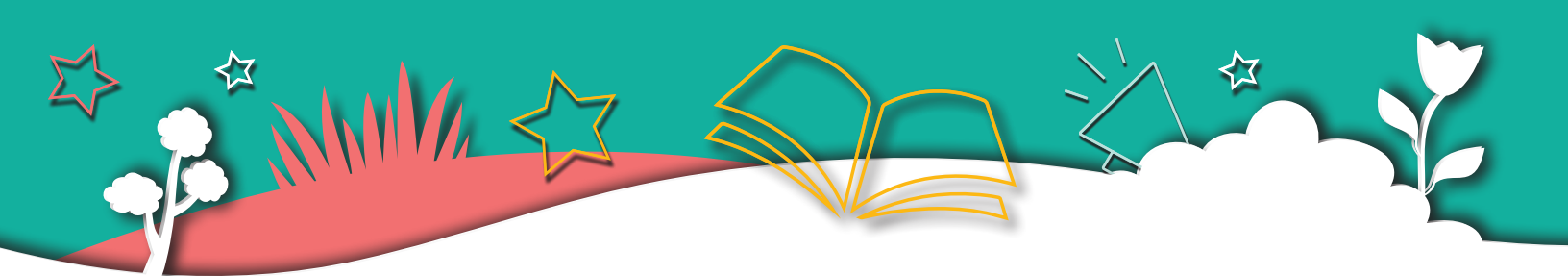
In **Know It, Show It**, children independently practice and apply what they have learned from high-frequency words, phonics, and spelling lessons. The online Know It, Show It Teacher's Guide includes teacher annotations.



## Foundational Skills and Word Study Studio

Use this bank of lessons to teach foundational skills or reinforce daily foundational skills lessons. Assess children's needs and then select lessons to provide strategic intervention in small groups for up to 30 minutes per day.

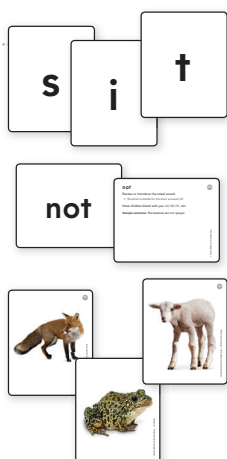
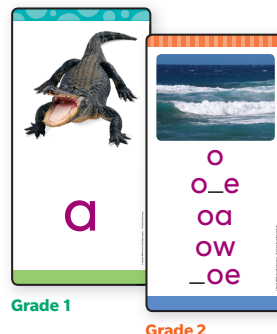




## Sound/Spelling Cards

Use **Sound/Spelling Cards** to introduce common spellings for the sounds in English words. Includes cards for:

- Consonants
- Consonant digraphs
- Short vowels
- Long vowels
- Vowel variants and diphthongs
- Consonant plus *-e*



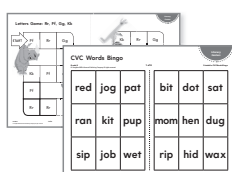
## Letter, Word, and Picture Cards

Use **Letter Cards** to build words for children to read in phonics lessons. The set includes cards for capital and lowercase letters, vowel teams and diphthongs, consonant digraphs, and punctuation marks.

Use **Word Cards** to introduce and help children practice reading and spelling each week's high-frequency words with automaticity.

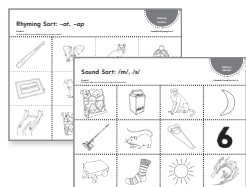
Use **Picture Cards** in phonological awareness and phonics lessons. Pictures on the cards support instruction for consonants and their sounds, consonant blends and digraphs, short and long vowels, r-controlled vowels, and other vowel sounds and diphthongs, as well as work with multisyllabic words.

**Game boards and cards** reinforce foundational skills including rhyming, syllabication, letter naming, initial sounds, vowel sounds, consonant blends, and digraphs.



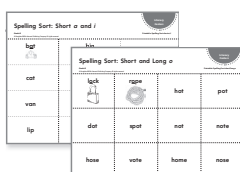
Make **Letter Books** to practice forming upper and lowercase letters and identifying the primary sounds of letters.

- 31 books: 21 consonants, 5 short vowels, 5 long vowels



**Picture sorts** build children's phonological awareness by having them group pictures by rhymes, syllables, and initial sounds.

**Spelling sorts** focus children on vowel spellings by having them group words based on short and long vowel spellings.



Use **Word Slides** and **Build Words** printable resources with their corresponding foundational skills lessons to practice blending, spelling, and manipulating words.



into Reading™



## A Vision for Student Growth

To learn more about *HMH Into Reading* visit [hmhco.com/intoreading](http://hmhco.com/intoreading)

Alphafriends®, The Learning Company™, HMH Into Reading™, Ed Your Friend in Learning®, HMH®, and Houghton Mifflin Harcourt® are trademarks or registered trademarks of Houghton Mifflin Harcourt. © Houghton Mifflin Harcourt. All rights reserved. Printed in the U.S.A. 02/20 WF1106310



Houghton Mifflin Harcourt.  
The Learning Company™

[hmhco.com](http://hmhco.com)