



Powered by Artificial Intelligence

Oral Reading Fluency Assessment

Dyslexia Screener

Practice



The Teacher's
Reading Assistant
Grades K-3

Classroom Tested and Always Learning

Powered by artificial intelligence (AI), *Amira* is the reliable classroom assistant that **assesses oral reading fluency** (ORF), **screens for dyslexia**, and provides **reading practice**.

Developed in conjunction with leading psychometricians, neuroscientists, reading scientists, and AI researchers, *Amira* generates actionable instructional recommendations with every interaction, maximizing the time teachers spend with students.

The *Amira* Reading Journey

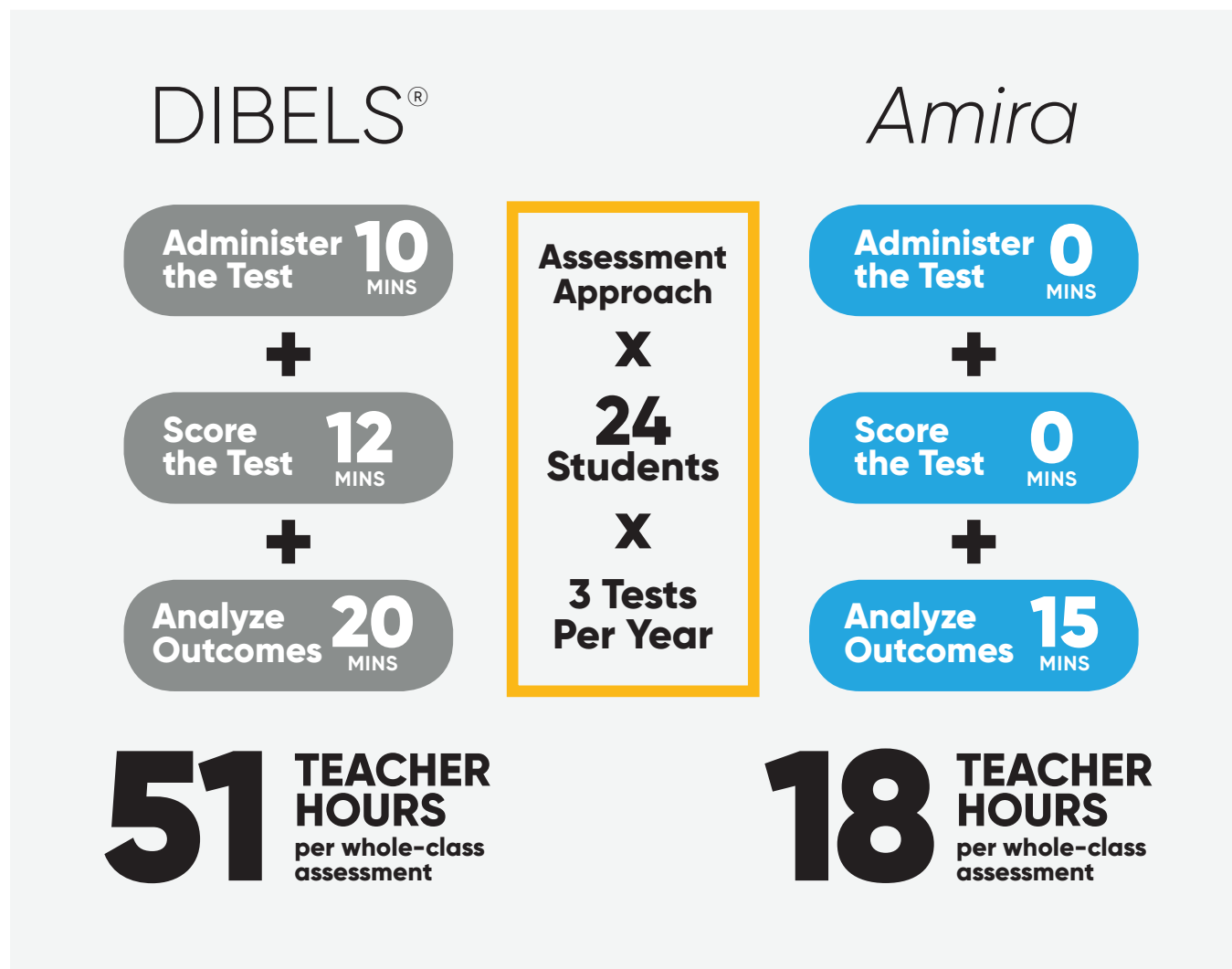


Effective and Reliable

While a student reads, *Amira* recognizes the subtleties of various dialects, speech deficits, and accents to deliver results free of bias. *Amira* automatically builds running records, saving teachers time and eliminating hours of administrative tasks.

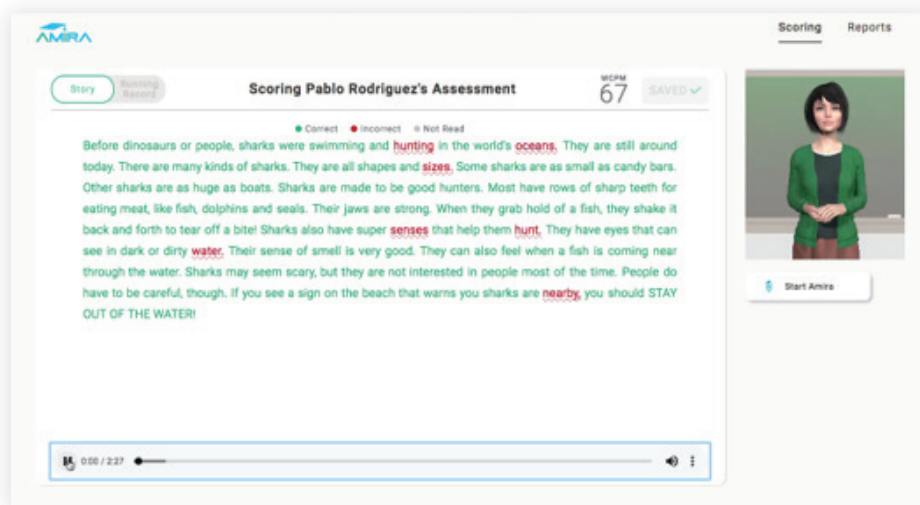
The result? **Teachers gain up to three weeks of time each year** to do more of what they do best: teach!

Gain Instructional Time



In 5–7 Minutes, *Amira* Can . . .

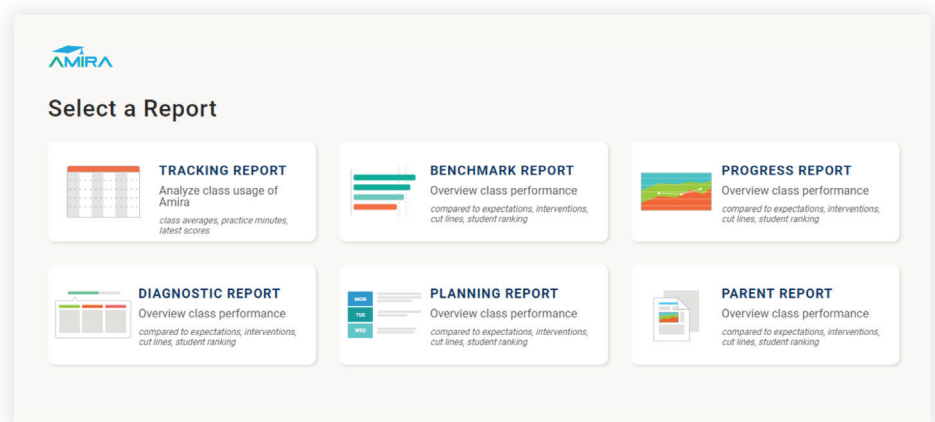
- ✓ Listen to and assess a student's reading
- ✓ Automatically generate a running record
- ✓ Provide teachers with actionable insights accessible via verbal commands



The *Amira* avatar automatically scores each student's reading and provides teachers with the recording, empowering teachers to confirm *Amira*'s scoring and make changes.

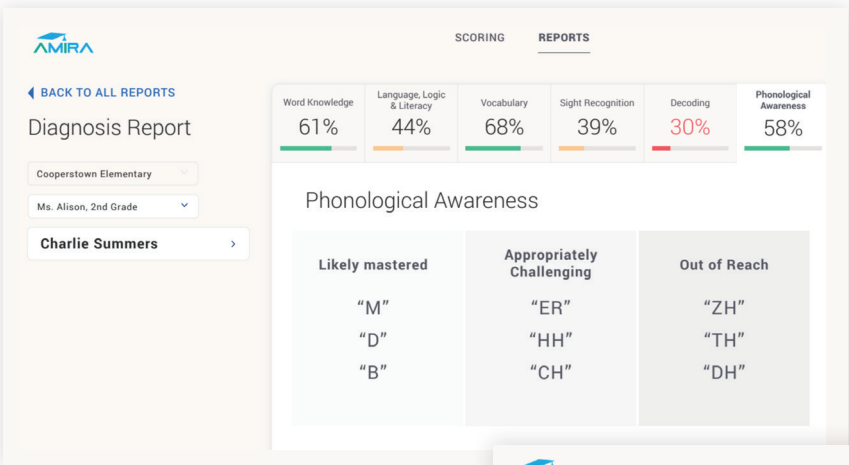
The Reporting Dashboard provides data that can be used to inform instruction. Specifically, teachers can:

- Get automated reporting within one click
- Access via voice commands, laptop, tablet, and more
- Track progress at a single point in time and over time
- Share reports with parents, literacy coaches, and administrators



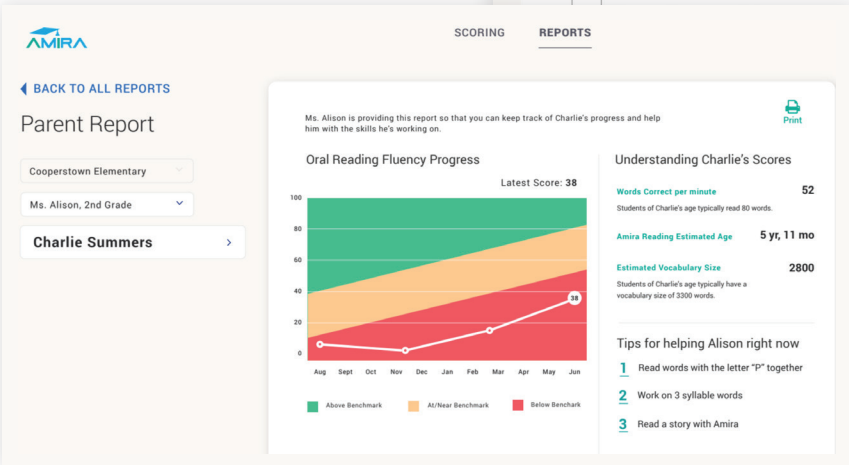
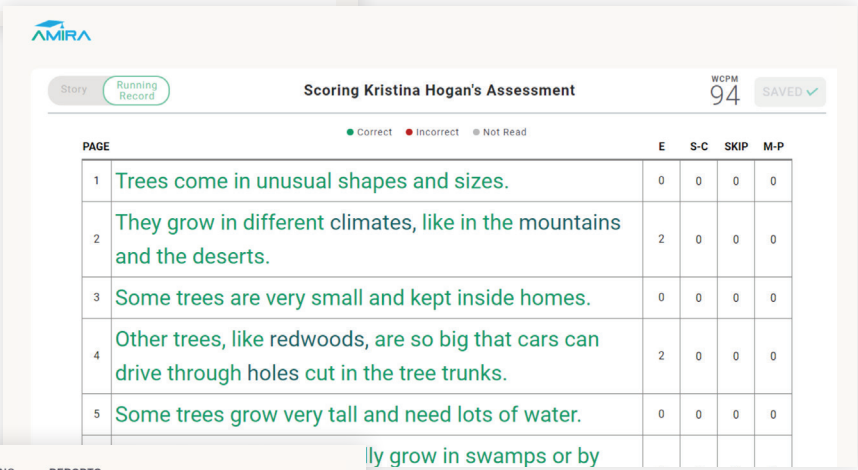
Actionable Insights for Parents, Teachers, and Administrators

Every interaction with *Amira* is automatically scored and reported, providing teachers with continuous insight into student progress.



Amira's Diagnosis Report breaks down individual student skills into Word Knowledge; Language, Logic, & Literacy; Vocabulary; Sight Recognition; Decoding; and Phonological Awareness. This automatic, detailed, skills-based analysis makes targeted instruction possible.

Amira Assessment is the only program that automates running records.



Amira's Parent Report provides actionable tips to support the home-to-school connection in real-world, easy-to-understand language. Teachers can share this report with parents via email and/or print the report for parent-teacher conferences.

Universal Dyslexia Screening within Reach

Early screening leads to early intervention.

- **Utilizes rapid automatized naming (RAN)**—*Amira* employs multiple techniques found to be reliable indicators of brain function associated with dyslexia.
- **Provides fully automated screening**—Neither administration nor scoring requires teacher time or training.
- **Listens directly to students read**—Other assessments employ proxies for reading instead of listening directly to the student.
- **Takes fewer than seven minutes per student**—Entire classes can be screened in minutes.
- **Generates actionable reports to empower timely intervention**—*Amira's* reporting provides at-a-glance data to drive instruction and differentiation.



Decades of Research Make Reliable Dyslexia Screening a Reality

Longitudinal research shows the dyslexia screener to be highly reliable in identifying students who are at risk for dyslexia.

The teacher assigns the assessment.

The screenshot shows the Amira dyslexia screener interface. On the left, a text box contains a reading passage titled "The School Fair". On the right, there is a video feed of a female teacher avatar. Below the video feed is a "pause" button. At the bottom right of the text box, there is a red "END ASSESSMENT" button.

The School Fair

Every year, Tom's school has a fair. Each class makes food and crafts for the fair. The food and crafts are for sale on tables. The food tables sell many good things to eat, but Tom's favorite treat is cheese popcorn. Mr. Smith, the P.E. teacher, makes the popcorn.

END ASSESSMENT

Amira displays dyslexia risk scores, enabling the teacher to recommend additional screening and intervention.

The screenshot shows the Amira dyslexia screener interface displaying a "Dyslexia Report". The report includes a list of students and their risk scores, categorized as "At Risk" (red) or "Low Risk" (green). The report also includes a "SCORE CONFIGURATION" section with options for "METRIC", "SCALE", and "BENCHMARKS".

AMIRA

Review Activities Reports Log Out

< BACK TO ALL REPORTS

Dyslexia Report

Howe Elementary

Amira Class

SCORE CONFIGURATION

METRIC
Dyslexia Risk Indicator (DSI)

SCALE
Dyslexia Risk Score

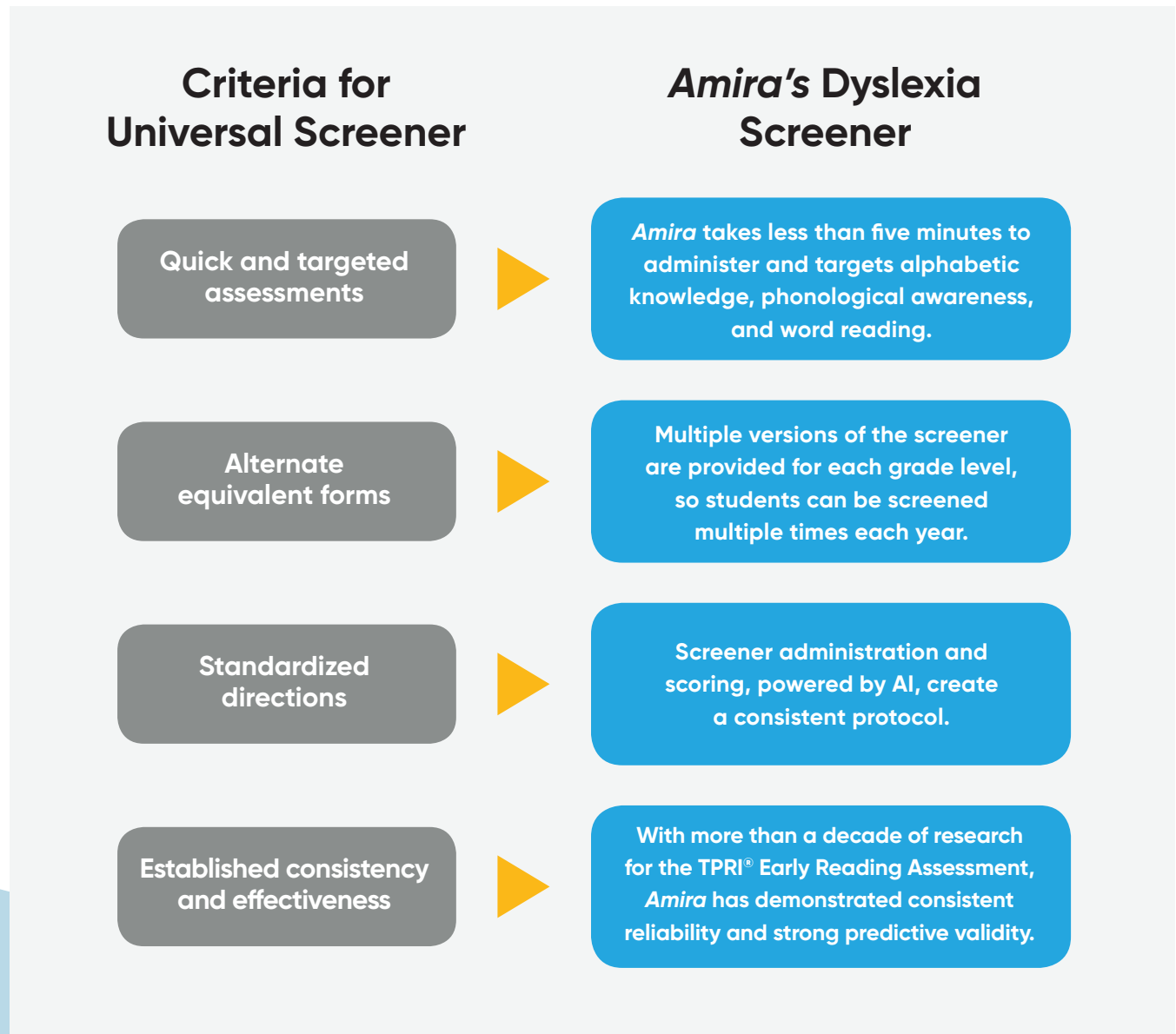
BENCHMARKS
Risk Levels - Grade 2

Student	Risk Score	Risk Level
John Doe	57	At Risk
Rickey Stone	64	At Risk
Kristi Gallegos	62	At Risk
Ben Jones	58	Low Risk
Julie Joyce	54	Low Risk
Emily Snell	50	Low Risk
Jed Ortega	46	Low Risk
Maribel Daugherty	42	Low Risk
Pete Student	41	Low Risk
Julia Childs	39	Low Risk
Jermaine Acosta	36	Low Risk
Ferdinand Lam	35	Low Risk
Warren Smith	35	Low Risk
Graham Hendrix	31	Low Risk
Mauro Becker	31	Low Risk
Ashlee Barber	27	Low Risk

Work with Amira

Meets Universal Screening Criteria

For students with disabilities in reading, early intervention is critical to reading success. The International Dyslexia Association recommends the below characteristics for a universal dyslexia screener tool:



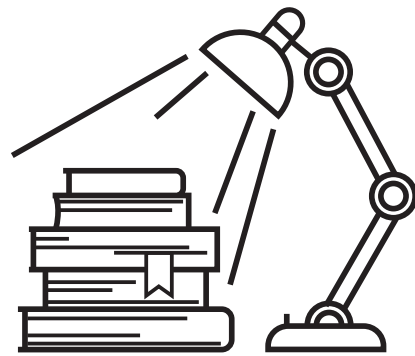
Disclaimer: The above chart is not intended to indicate any endorsement or accreditation of Amira's dyslexia screener by the International Dyslexia Association.

Gold Standard Research

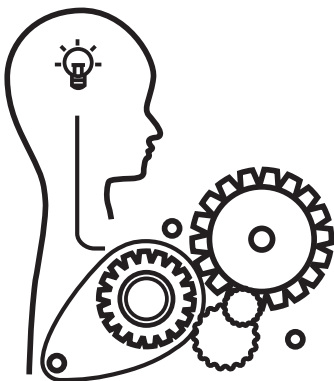
Amira Assessment is the culmination of 20+ years of reading research and applied reading science from leading universities and researchers from Carnegie Mellon University, Johns Hopkins University, and University of Texas Health Sciences. Evidence supporting *Amira's* effectiveness includes more than 100 published research papers and is considered "gold standard."



Psychometrics



Reading Science



Artificial Intelligence



Speech Recognition

To learn more, visit hnhco.com/amira

To see research publications and citations, visit
cs.cmu.edu/~listen/pubs.html

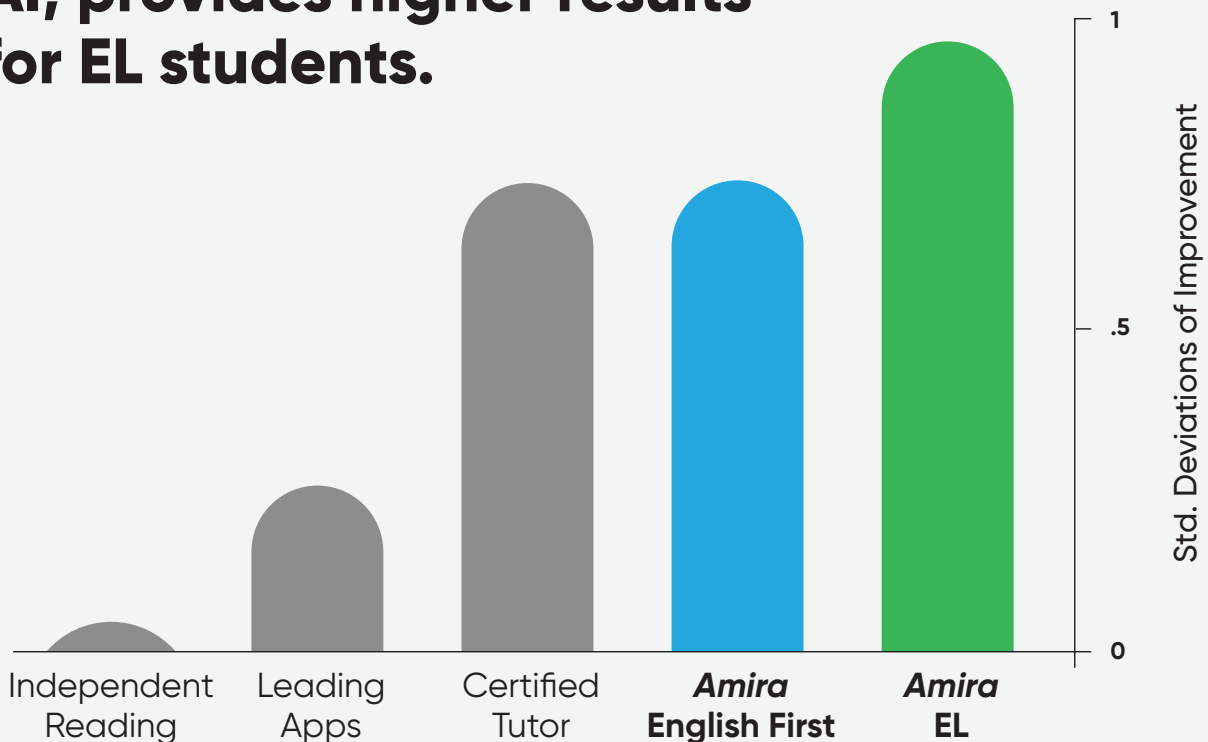
Amira Practice, Powered by AI

Amira Practice provides students with the **individual attention** they crave, delivered through a patient AI avatar that reduces instructional stress.

Amira makes **individual tutoring** scalable, maximizing the number of students who can receive personal attention. The AI avatar, Amira, is highly trained, employing greater than 25 different micro-interventions backed by reading science.

Watch your students flourish with individual tutoring from *Amira*, powered by AI.

Amira Practice, powered by AI, provides higher results for EL students.



Benefits Students, Teachers, and Administrators

- ✓ **Easily Administer Oral Reading Fluency Assessments**—Artificial intelligence and cutting-edge speech recognition remove subjective errors, judgments, and testing biases.
- ✓ **Provide Universal Dyslexia Screening**—Effective and efficient, the dyslexia screener is easy to implement and quickly identifies students who may be at risk.
- ✓ **Save Teachers Time**—*Amira Assessment* can be administered quickly to multiple students at the same time, providing the teacher with time to focus on instruction.
- ✓ **Increase Students' Comfort during Assessment**—*Amira* guides students through the assessment process, reducing reading and test-taking anxiety.
- ✓ **Maximize Instructional Effectiveness**—Using verbal commands, teachers are able to share automated reports of student results with both peers and parents.



A Reading Assistant for Every Teacher



To learn more about *Amira*,
visit **hmhco.com/amira**

Amira Learning™ is a trademark of Amira Learning, Inc. TPRI® is a registered trademark of Texas Education Agency. DIBELS® is a registered trademark of Dynamic Measurement Group, Inc. Houghton Mifflin Harcourt®, HMH®, and The Learning Company™ are trademarks or registered trademarks of Houghton Mifflin Harcourt. © Houghton Mifflin Harcourt. All rights reserved. 10/19 WF994925 Z-1787132



Houghton Mifflin Harcourt.
The Learning Company™

hmhco.com