

Effective Reading Tutoring for *HMH Into Reading*

Amira, from HMH, complements your *HMH Into Reading* instruction with 1:1 reading tutoring in English and Spanish, from anywhere.

One Place, One Login

Launch *Amira* and *HMH Into Reading* from Ed, the HMH learning platform.

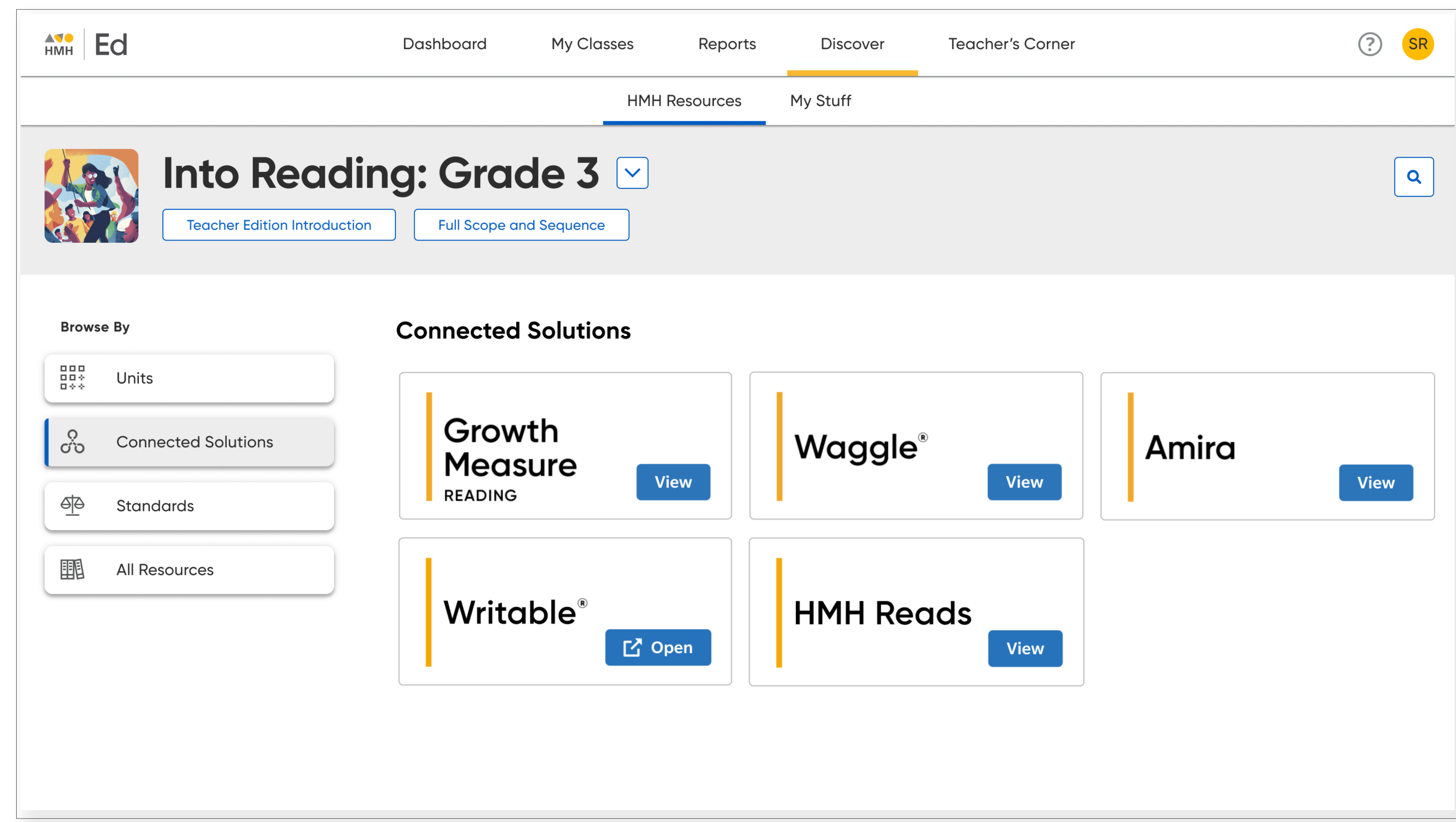
Connect in new ways:

With Connected Teaching and Learning on *Ed*, robust differentiation resources are at your fingertips.

Connect assessment insights with differentiated instructional content, tools, and resources to drive student growth.

Only *Amira* with *HMH Into Reading* connects reading fluency assessment results directly to relevant core content.

[Learn More about Ed](#)



Connected Classroom

Whole group and small group instruction working together.

The Link:

With automated micro-interventions and scaffolded skills instruction, *Amira* makes it easy to reach more students and differentiate independent practice, small group instruction, and homework.

While reinforcing practice between whole group lessons, *Amira* helps the tutor to understand the student's strengths and weaknesses and provides important data to inform each session.

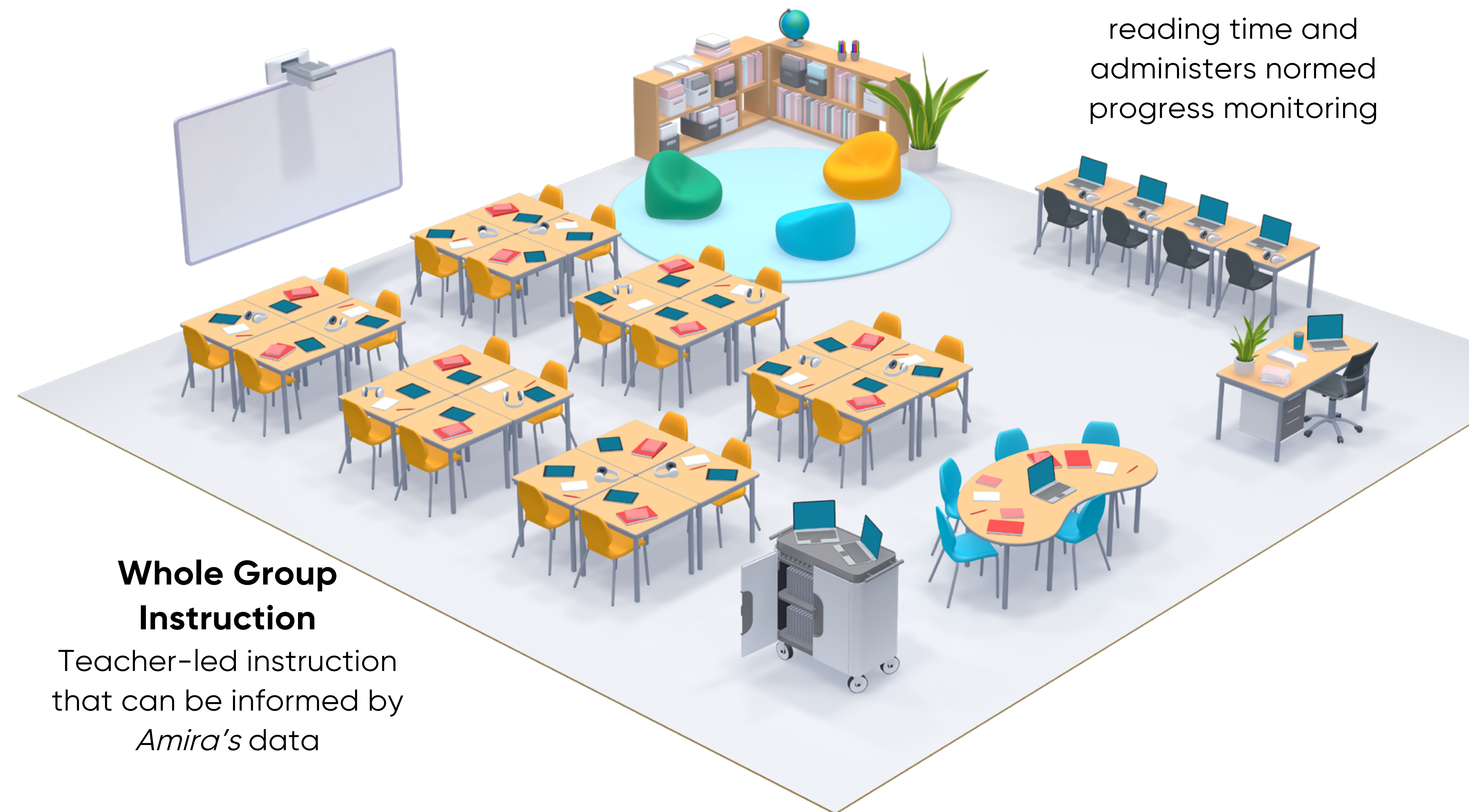
[Learn More](#)

Whole Group Instruction

Teacher-led instruction that can be informed by *Amira's* data

Small Group Instruction

Increases student reading time and administers normed progress monitoring

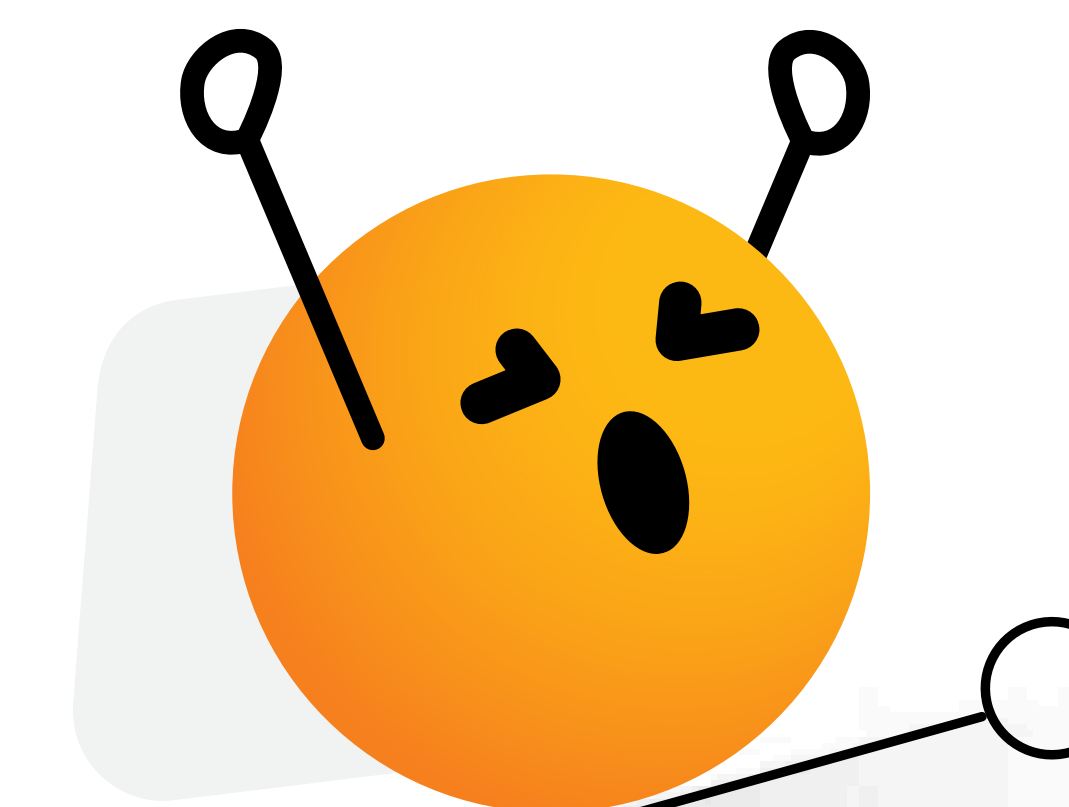


Whole Group Instruction

Systematic and explicit instruction served daily.

Provide students with a developmental progression in all areas of early literacy with *HMH Into Reading's* evidence-based scope and sequence.

The integration of skills in *HMH Into Reading* happens in every module and week throughout the year to develop fluent, automatic readers.



Kindergarten

- Demonstrate knowledge of print concepts.
- Recognize letters and letter names with automaticity.
- Form upper and lowercase letters.
- Connect spoken sounds to written letters.
- Decode words accurately and fluently.
- Recognize a number of high-frequency sight words.

Grade 1

- Connect spoken sounds to written letters.
- Work with consonant digraphs before consonant blends.
- Decode multisyllabic words at the end of Grade 1.
- Apply decoding and encoding in writing and spelling.
- Recognize an increasing number of high-frequency words.
- Develop academic vocabulary through direct instruction and practice.
- Add prefixes and suffixes to make new words (end of Grade 1).

Grade 2

- Learn the six syllable types and syllabication.
- Decode multisyllabic words accurately and fluently.
- Apply decoding and encoding in writing and spelling.
- Recognize an increasing number of high-frequency words.
- Develop academic vocabulary through direct instruction and practice.
- Use an expanded number of prefixes and suffixes to create new words (end of Grade 2).

Grade 3

- Apply decoding skills (including prefixes and suffixes) to fluency passages and multisyllabic words.
- Work with spelling patterns and use developing phonics/decoding skills in writing.
- Develop academic vocabulary through direct instruction and practice.
- Use prefixes, suffixes, and root and base words to create new words. (Greek and Latin roots at the end of Grade 3.)

Grade 4

- Apply decoding skills (including prefixes, suffixes, and roots) to fluency passages and multisyllabic words.
- Work with spelling patterns and use developing phonics/decoding skills in writing.
- Develop academic vocabulary through direct instruction and practice.
- Use prefixes, suffixes, base words, and Greek and Latin roots to create new words.

Grade 5

- Apply decoding skills (including prefixes, suffixes, and roots) to fluency passages and multisyllabic words.
- Work with spelling patterns and use developing phonics/decoding skills in writing.
- Develop academic vocabulary through direct instruction and practice.
- Use prefixes, suffixes, base words, and Greek and Latin roots to create new words.

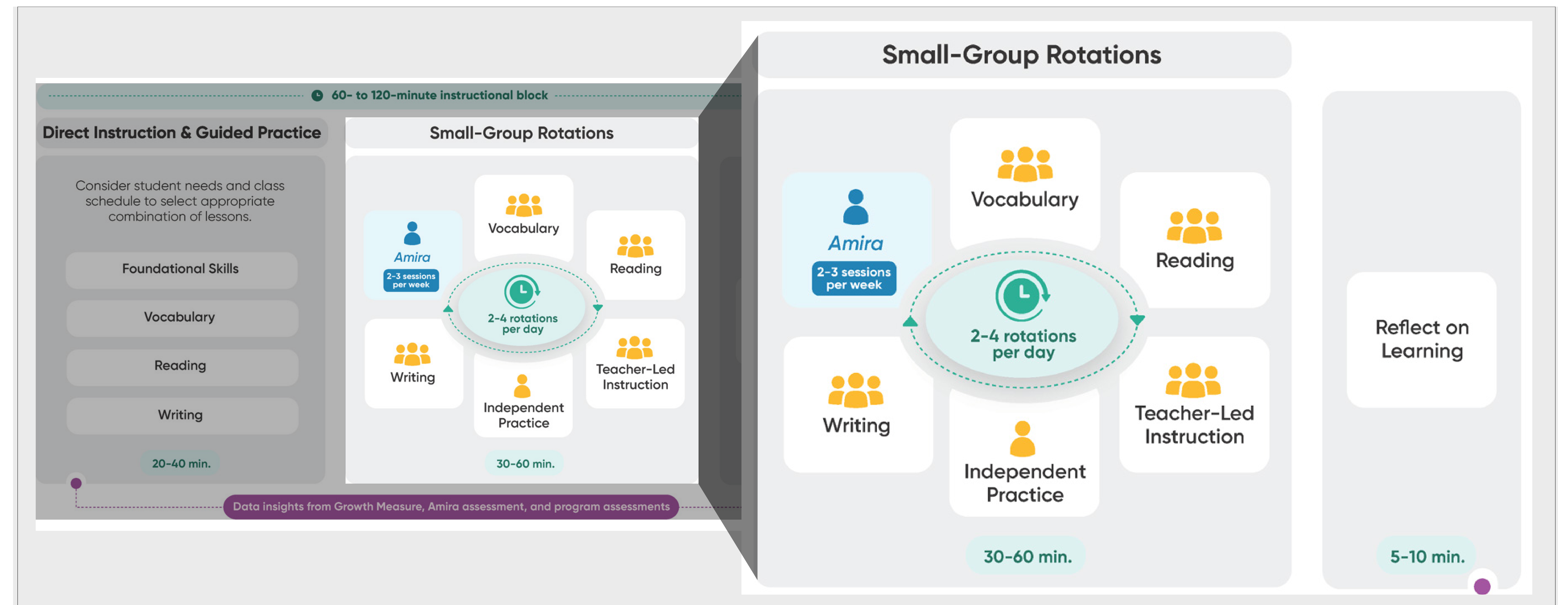
Small Group Rotations

Automatized differentiation aligned to your core content.

Drive student growth:

Provide teachers with a differentiation option that fits perfectly into 15-20 minute rotations and requires little to no teacher planning.

Students are automatically placed into reading tutoring based on their *Amira* assessment results.



Assign *Amira* for student use during small-group rotations, computer lab, or after-school time.

1:1 Reading Tutoring

Empower reading mastery.

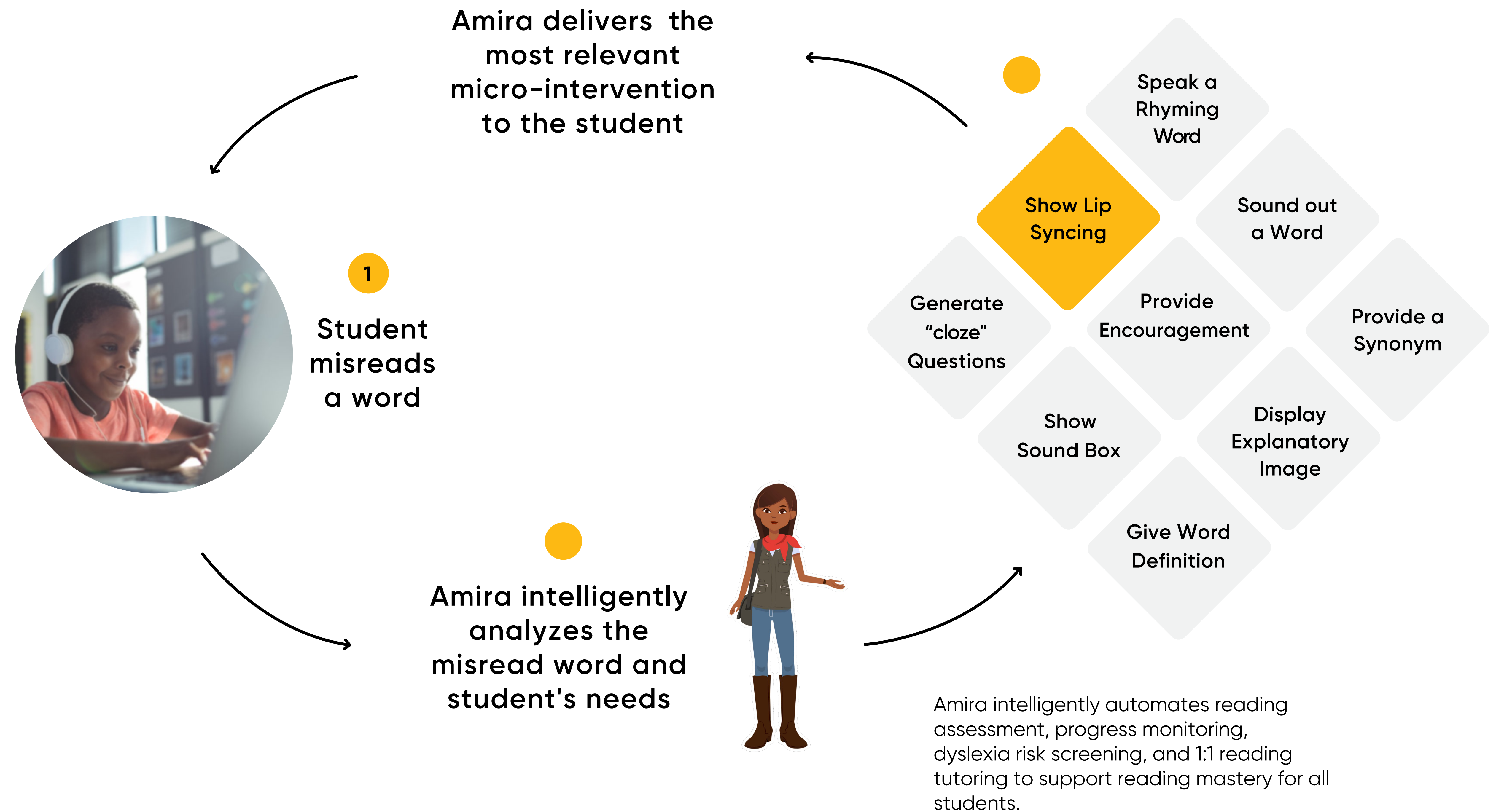
The Experience:

Amira listens while a student reads out loud and measures the student's fluency to the millisecond to assess fluency and detect dyslexia risk.

Then, the student is placed into differentiated 1:1 reading tutoring based on their assessment results.

Rooted in decades of research and development, *Amira* is the first program of its kind to support all five pillars of reading.

[Learn More](#)



Connected Content

Foster gains aligned to literacy strands in small groups.

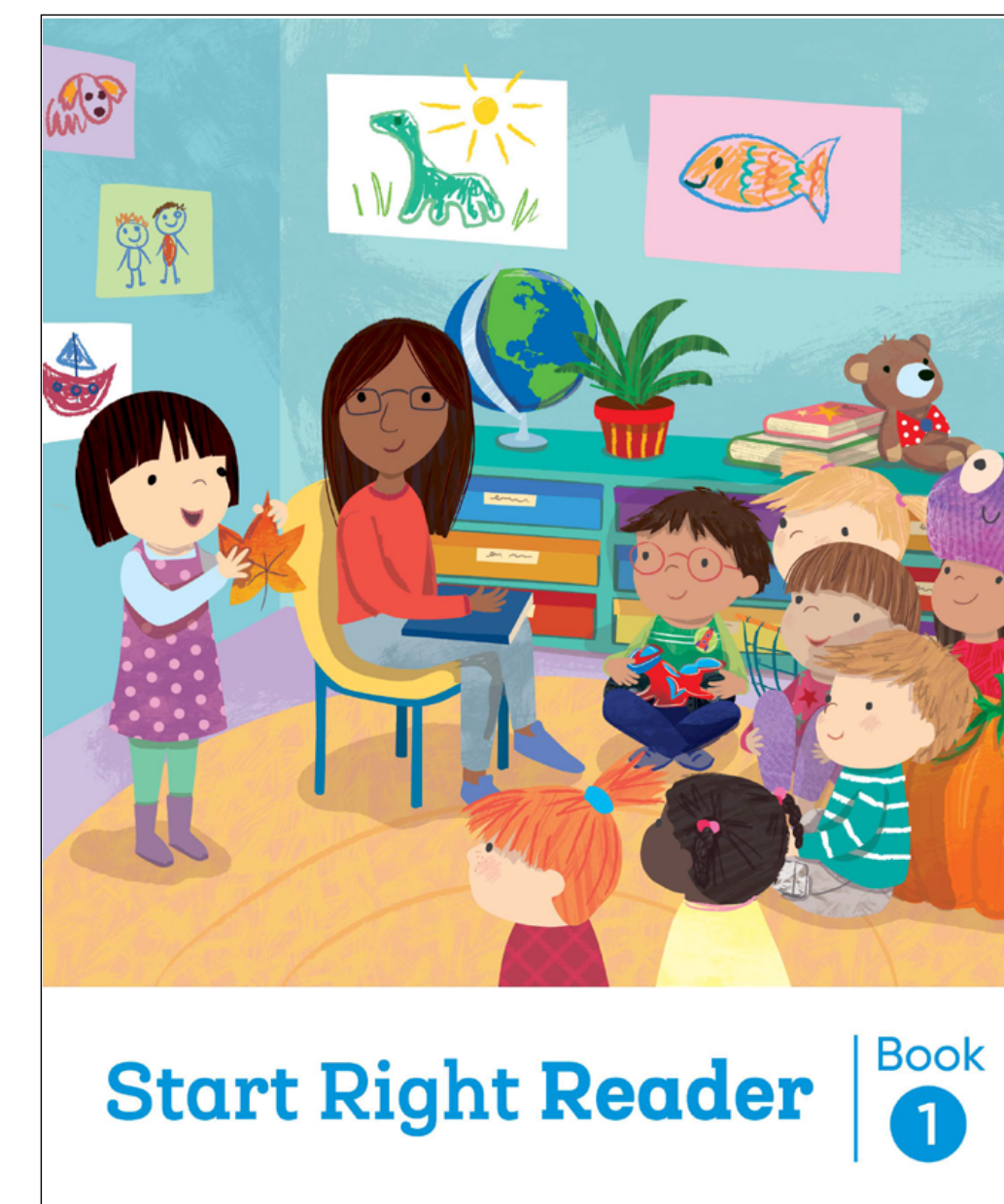
The Experience:

Student can read *HMH Into Reading's* **Start Right Readers** predecodable and decodable texts within *Amira* to provide a variety of both Foundational Skills and Comprehension Skills.

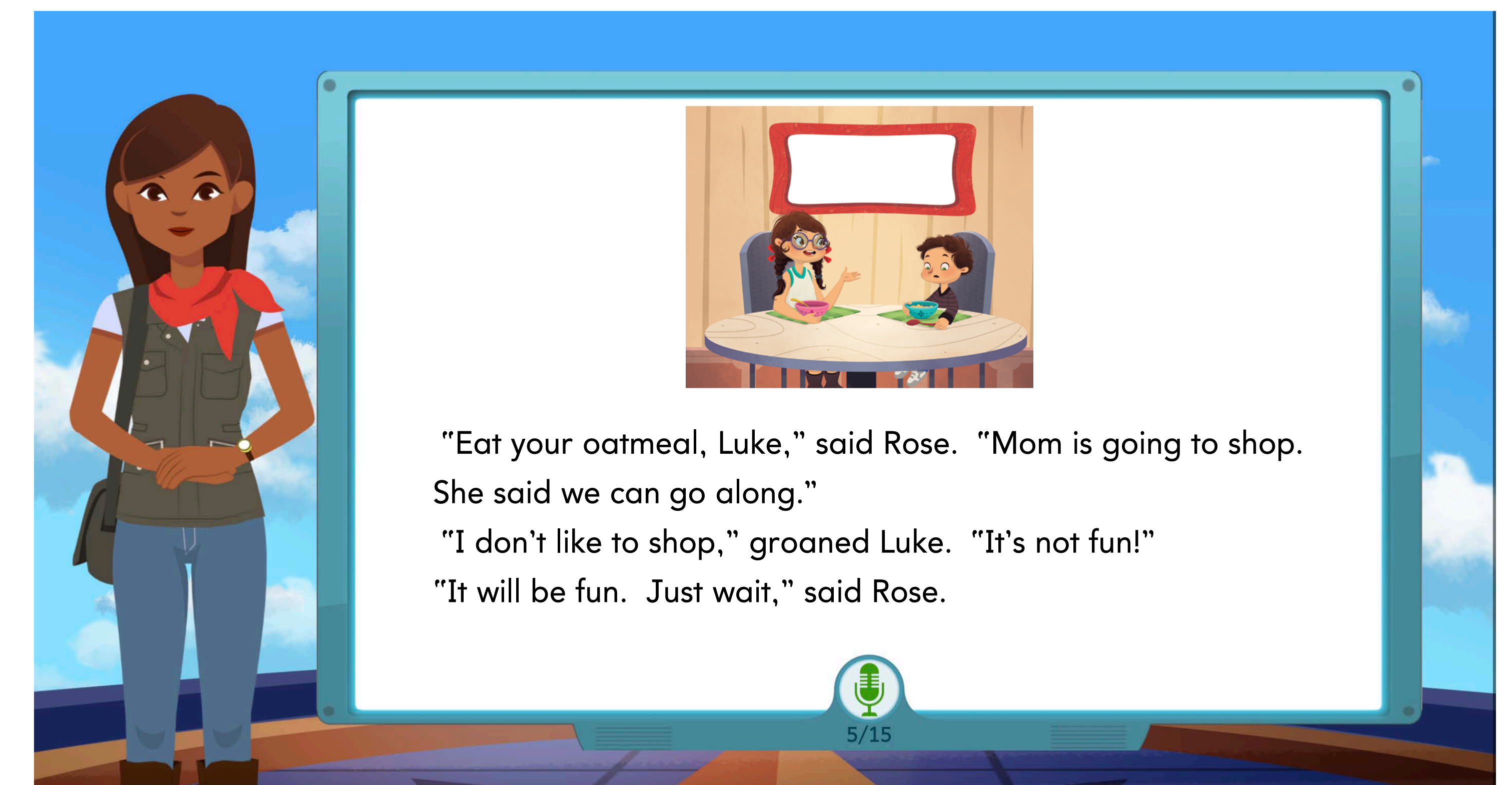
"Fall-in-love-able" readers will be the star of your small group rotations!

And what's great is that you will save time with ready-made lessons that provide targeted instruction aligned to *HMH Into Reading*.

[Learn More](#)



Decodable Reader



The Skills Diagnostic Report

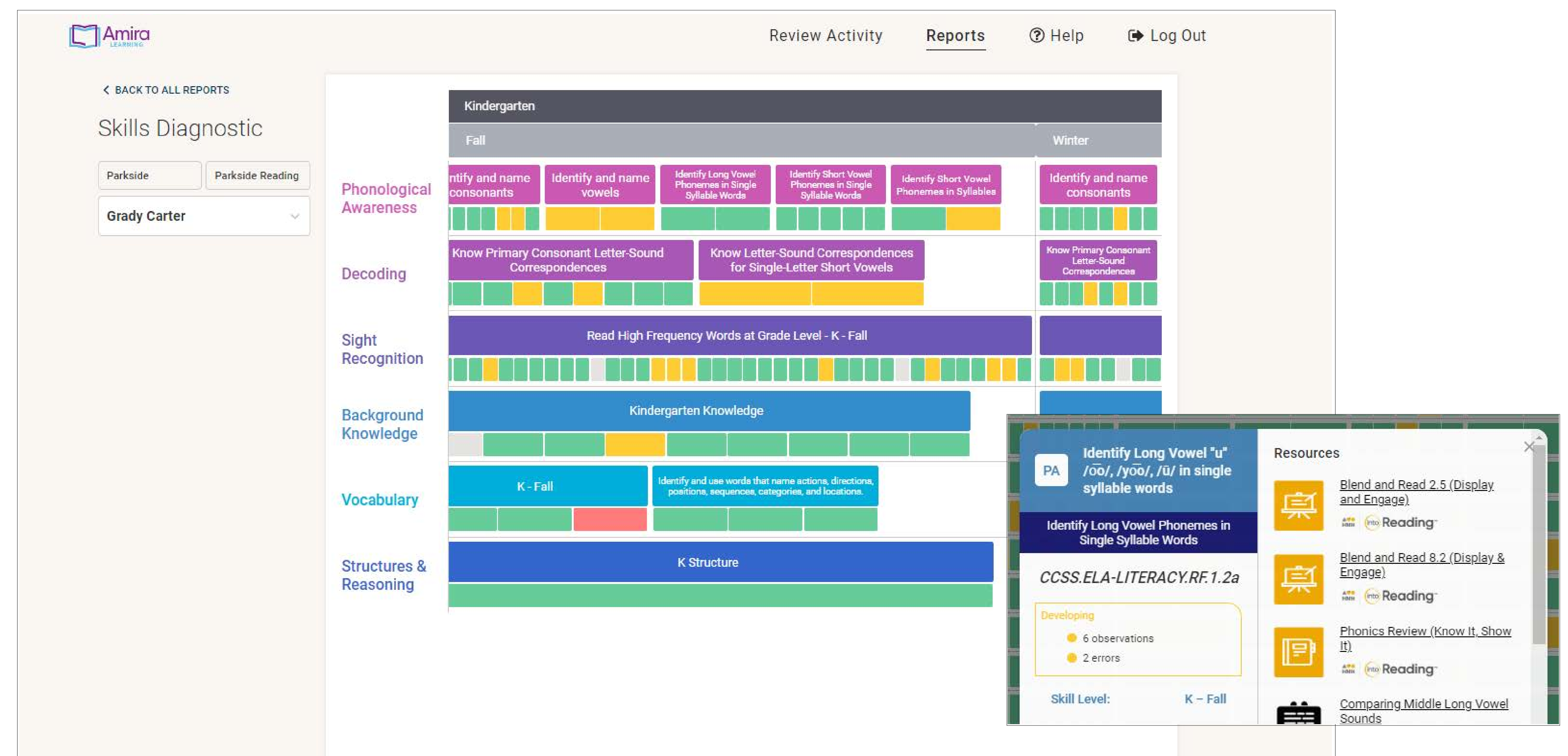
Receive detailed information about individual student skills.

Report Overview:

Whenever a student is assessed with *Amira*, the Skills Diagnostic Report will show the skills within a student's Zone of Proximal Development and provide a set of recommended *HMH Into Reading* resources to instruct on those skills.

The Skills Diagnostic Report provides teachers with a list of concepts or skills that are "developed" and "not developed" to support *HMH Into Reading* instruction.

[Learn More about Reporting](#)



Science of Reading Aligned

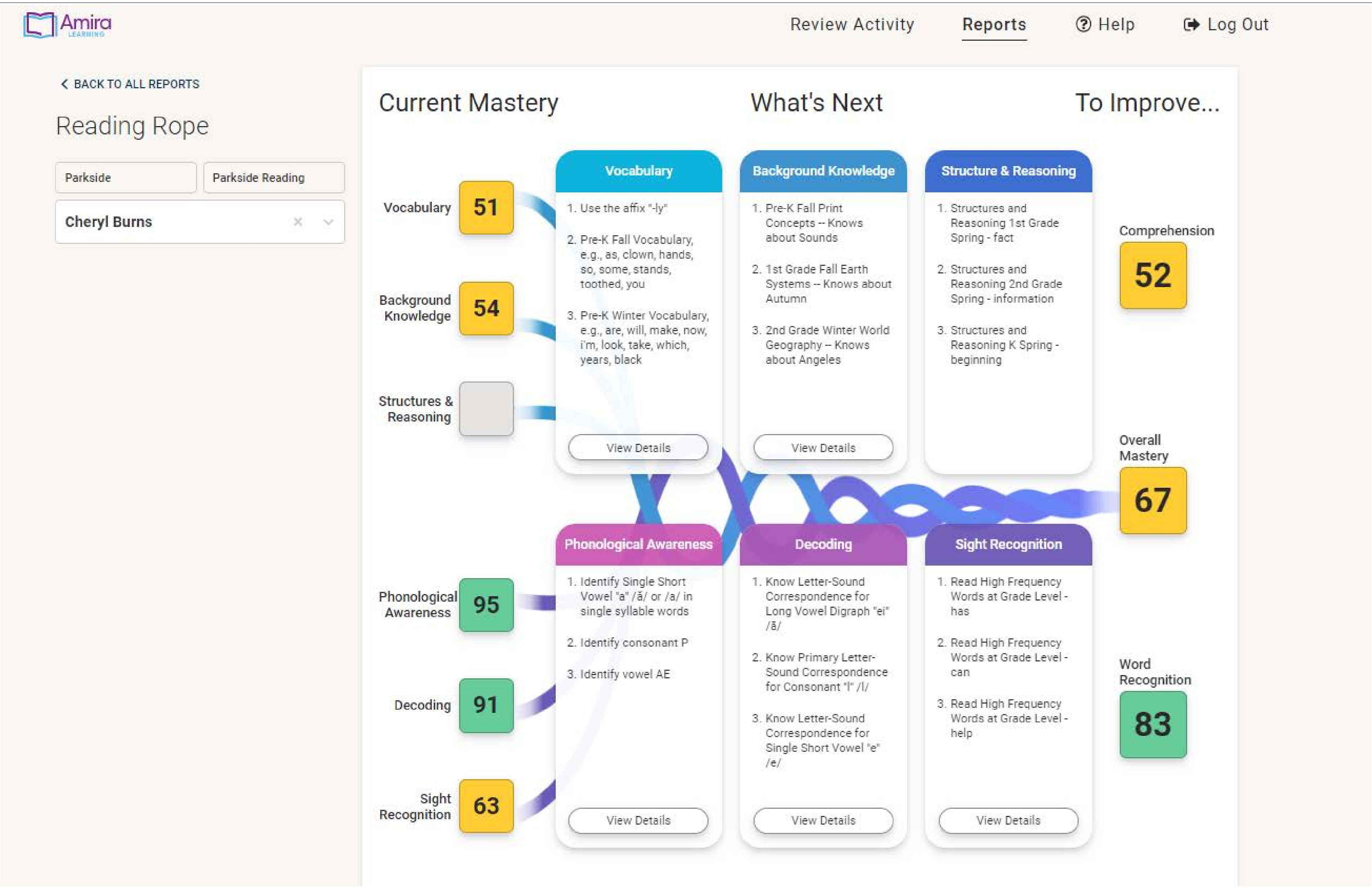
Six pillars of reading informing your connected classroom.

Report Overview:

The Instructional Recommendations Report weaves the six different components about an individual student skills through a visualization of Scarborough’s Reading Rope (Comprehension and Word Recognition). A teacher can see at a glance where a student is “strong” and “weak”.

Detailed skills-based analysis makes targeted instruction possible.

Learn More about SoR Alignment





Explore *Amira* *Learning* Today!

hmhco.com/amira

Amira Learning® is a registered trademark of Amira Learning, Inc. HMH Into Reading® and HMH® are registered trademarks of Houghton Mifflin Harcourt Publishing Company.