



# All Learners Are Capable of Growth and Success

Special Education and  
Intervention Solutions

△▽○  
HMH



**“Every student can  
learn, just not on  
the same day or in  
the same way.”**

—George Evans  
American Cartoonist





## Special Education

**As special education teachers, we want to deliver students opportunities to make choices about their lives, identify and achieve goals, contribute meaningfully to the world around them, and develop their independence skills.**

HMH's goal is to focus on enriching the lives of students, boost confidence, and help the most challenged students succeed.



# Special Education by the Numbers

## Did you know...



**7 Million**  
Students

According to the National Center for Education Statistics there are 7 million special education students in U.S. public schools. This is an increase of 30% over the past decade.



**2 Million**  
Children

A little more than 2 million children are receiving special educational services for a reading disorder.



**1 in 16**  
Students

1 in 16 public school students have IEPs for learning disabilities or for other health impairments.



**54%**  
of the Kids

More than half (54 percent) of the kids in special education have IEPs for learning disabilities.



Encouraging each unique student requires an understanding of where they need support. Access to real-time data, program-embedded assessments, and adaptive learning helps teachers target instruction to extend the knowledge and skills of every student, regardless of their starting point.

Let's lift the performance of all students.

# Solutions



## **Amira Learning** Page 6

**1:1 Reading Tutoring that Doubles Student Reading Growth**  
Grades K–6



## **HMH Reads** Page 7

**Skills-Based Reading Instruction**  
Grades K–5



## **Hero Academy** Page 8

**Rich Social and Emotional Reading Instruction**  
Grades Pre K–4



## **inFact** Page 9

**Nonfiction Informational Texts**  
Grades K–5



## **Rigby PM** Page 10

**Diverse and Relatable Realistic Fiction Titles**  
Grades K–5



## **JillE Literacy** Page 11

**Engaging Reading Instruction with Compelling Texts**  
Grades K–3



## **Math 180** Page 12

**Intensive Intervention with Proven Efficacy**  
Grades 5–12



## **Read 180** Page 13

**Comprehensive Reading Intervention**  
Grades 3–12



## **Saxon Phonics and Spelling** Page 14

**Explicit, Systematic, Research-Based Phonics Instruction**  
Grades K–2



## **Waggle** Page 15

**Personalized Practice and Instruction for Reading and Math**  
Grades K–8



## **Professional Learning** Page 16

**Customized and Comprehensive Educator Learning**

# Amira Learning

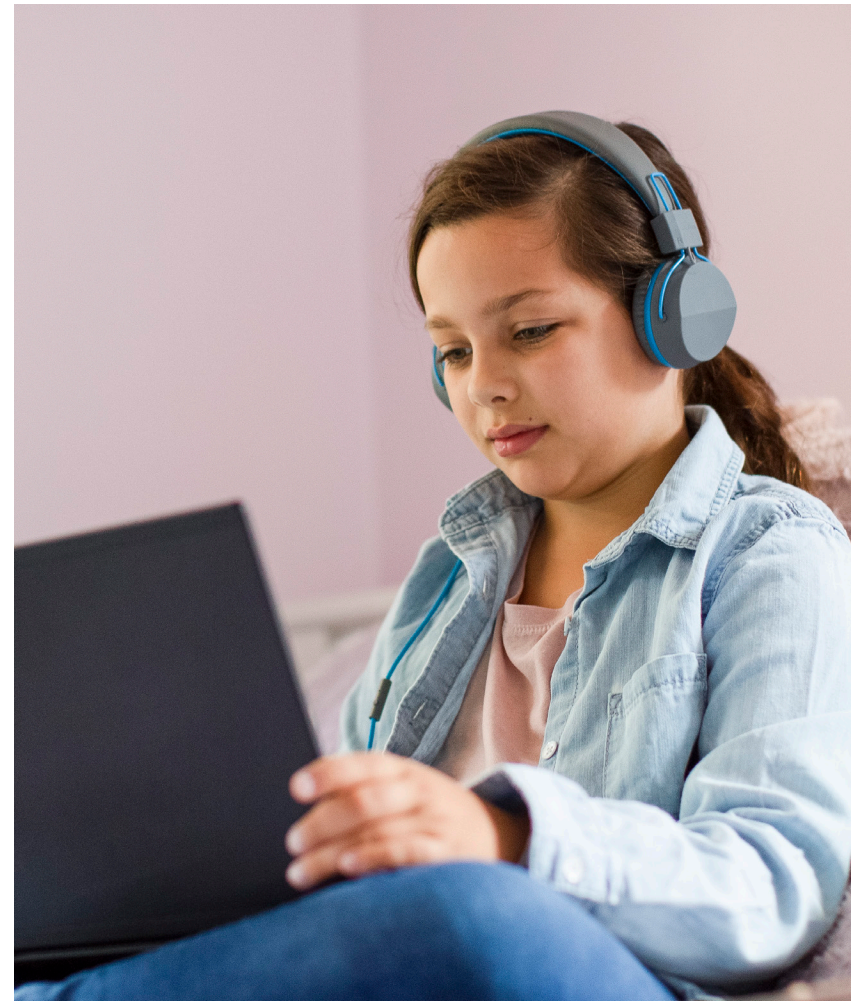
Grades K–6



Our mission is to make every child a motivated and masterful reader. *Amira Learning*® assesses oral reading fluency (ORF), provides effective 1:1 reading tutoring, and screens for dyslexia risk to help accelerate reading mastery for all students—in English or en español.

## Special Features:

- *Amira* recognizes subtleties of various dialects, speech deficits, and accents to deliver results without bias.
- Students are automatically placed into engaging, powerful 1:1 tutoring that keeps students in their zones of proximal development.
- The Dyslexia Screener identifies students at risk of dyslexia and other disorders.
- Students who are identified as early readers practice with *Amira* through an Early Readers Skills Scaffold.
- *Amira*'s approach to reading success is built on decades of research and continues to be studied and enhanced upon.



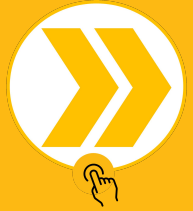
# HMH Reads

Grades K–5

Opportunities for independent reading can have an enormous impact on literacy development and help students build the foundation needed to become avid readers. *HMH Reads™* provides learners with disabilities high-quality, engaging digital books from various genres and reading levels that spark their sense of wonder and help them build confidence.

## Special Features:

- *HMH Reads* features a blend of 480+ digitally enhanced, high-quality fiction and nonfiction titles from *Hero Academy*, *inFact*, and *Rigby PM* leveled series.
- Engaging titles at varying levels support skills-based reading instruction and improve background knowledge.
- Built-in teacher supports for every text provide teachers with everything they need to plan, share, and guide reading growth.
- HMH Growth Measure and embedded story assessments help teachers place students in the right collection and provide ongoing progress monitoring.





# Hero Academy

Grades Pre K–4



The right books can ignite a love of learning while building solid character traits. In this *Rigby*® leveled series, seven lovable student superheroes face and overcome challenges, and reinforce social-emotional growth, while manageable instruction in each lesson emphasizes development of these traits.

## Special Features:

- *Hero Academy* helps students with disabilities build comprehension, vocabulary, fluency, and other key literacy skills.
- Engaging SEL-focused themes and topics increase students' desire to keep reading.
- Use of writing and speaking helps students express high depth of knowledge levels.
- Project-based activities for each book include multi-sensory learning experiences.
- Each text has Take and Teach lessons with close reading questions for comprehension and depth of knowledge without struggle or frustration.



# inFact

Grades K–5

Motivating exceptional students to read nonfiction requires capturing their attention and sparking their sense of wonder. Expose students early to informational texts with *inFact*, a leveled series filled with awe-inspiring artwork and photography, paired with strategic text placement that helps draw students into a wide range of cross-curricular topics.

## Special Features:

- With precise leveling across 91 titles, *inFact* ensures students receive just the right book for them.
- Nonfiction informational texts encourage students to read closely and find evidence while boosting their comprehension skills.
- *inFact* helps students grow academic vocabulary and background knowledge.
- Each text has Take and Teach lessons with close reading questions for comprehension and depth of knowledge.





# Rigby PM

## Grades K–5

Engage, excite, and advance all readers with texts they look forward to diving into. Trusted for over 50 years, *Rigby PM* leveled series makes lessons fun and keeps students motivated while closing reading gaps. With a wide variety of genres from poetry, to fairy tales, cross-curricular informational texts, do-it-yourself class projects, and realistic fiction with recurring characters, the newest *Rigby PM* titles are sure to delight all your readers.

### Special Features:

- Match every student with meaningful texts and easy-to-spot leveling indicators including *Rigby* leveling, Fountas & Pinnell, and Lexile® to inspire confidence as students move from one skill level to the next.
- *Rigby* addresses comprehension through a wide exposure to text types and genres.
- Each book has Take and Teach lessons, with close reading questions for comprehension and project-based activities for multisensory learning and depth of knowledge with relevant content.
- Teachers and administrators can quickly and precisely quantify students' strengths and weaknesses to measure progress towards Individualized Education Plan (IEP) goals.





# JillE Literacy

Grades K–3



***JillE Literacy*<sup>®</sup> is a collection of whole-class and small-group texts, developed to promote student engagement while providing built-in, evidence-based instruction that helps teachers target the most critical skills and strategies students need to become successful independent readers and writers.**

## **Special Features:**

- Unique collection of delightful stories, poems, and informational texts engage students while building foundational literacy skills
- *JillE* helps teachers differentiate instruction based on each student's unique needs, which supports diversity, equity, and inclusion.
- Comprehensive, easy-to-follow instructional support saves valuable planning time and maximizes instructional time.
- *JillE* builds motivation and engagement by creating joyful reading experiences in which students achieve successful reading growth without struggle or frustration.



# Math 180

Grades 5–12



Every student learns differently. No one knows this better than a parent/caregiver of a child with disabilities. *Math 180*® assesses and teaches to the specific needs and strengths of each child, providing customized instruction to help him or her succeed in the classroom.

## Special Features:

- Instruction in class and on software focuses on the growth mindset belief that all students can be successful in mathematics.
- Age-appropriate, adaptive software allows students to move at their own pace and receive individualized, targeted instruction.
- High-interest topics and connections to math keep students motivated and engaged.
- Visual models and interactive math tools promote a deep understanding of math concepts.
- Immediate corrective feedback addresses misconceptions and errors.
- Point-of-use data and reports measure progress toward Individualized Education Program (IEP) goals.



[Click to Go to Solutions](#)



# Read 180

## Grades 3–12



Originally developed for students receiving special education services *Read 180*® is proven to accelerate striving readers to grade level by merging the latest research in brain science, growth mindset, ongoing assessment, adaptive technology, and professional development.

### Special Features:

- Point-of-use data and reports allow teachers to differentiate instruction and measure student progress toward IEP goals, both academic and behavioral.
- Easy-to-use dashboards and informative assessments place students in the program and monitor their progress over time.
- Personalized learning with adaptive technology empowers students to work independently at their own level and pace.
- Instructional tools and resources meet the diverse language, cognitive, social, and emotional needs of students.







# Saxon Phonics and Spelling

Grades K–2

Building the strong reading foundation every student deserves can be a struggle. Based on Orton-Gillingham, *Saxon® Phonics and Spelling* was born out of certified language-retraining therapist Lorna Simmons's personal mission to help her eight-year-old son successfully manage dyslexia and learn to read.

## Special Features:

- *Saxon Phonics and Spelling* provides targeted foundational skills instruction for all learning modalities that aligns with the Orton-Gillingham approach for differentiated instruction, including special education and dyslexia.
- *Saxon* targets Tier I, Tier II, and Tier III instructional needs by delivering robust instruction and engaging materials to keep students excited and advancing.
- Daily teacher and student interaction, student worksheets, decodable readers, and weekly assessments are all diagnostic and provide formative data.
- Cumulative assessments monitor whether students are gaining and maintaining knowledge.



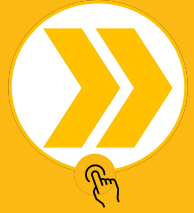
# Waggle

Grades K–8

Each student's learning path looks a little different. With *Waggle's* personalized practice and instruction, **ALL** students thrive. Embedded mindset tasks combined with gaming elements ignite a love of learning!

## Special Features:

- *Waggle*® helps students develop a “can-do” attitude through approachable challenges within their zone of proximal development.
- Only *Waggle* measures 13 different data points to precisely personalize each student's experience, keeping students engaged with relevant content.
- Teachers and administrators can quickly and precisely quantify students' strengths and weaknesses to measure progress towards Individualized Education Plan (IEP) goals.
- Social-emotional learning is woven throughout *Waggle*, including its games and instructional content. Embedded hints and feedback help students develop a growth mindset, unlocking their inner academic potential.



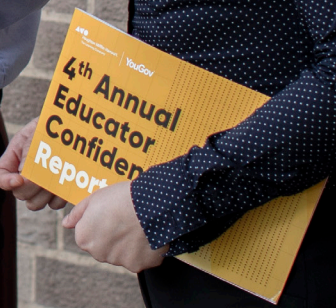


# Professional Learning

**Research confirms that teachers are the single most important factor in raising student achievement. The role of special education teachers is critical as we strive to challenge, engage, and empower all students.**

*HMH Professional Services* helps educators, schools, and districts achieve development centered on student outcomes and learning goals. With program implementation support, coaching, courses, and consulting, we help you identify your goals and create an explicit pathway to achieving them. Together, we'll build a sustainable culture of professional growth and student learning that embraces "different."







# Notes

This image shows a single sheet of white paper with horizontal ruling lines. The lines are evenly spaced and run across the width of the page. There are no margins, text, or other markings on the paper.

# Notes





**We believe  
that every  
learner is  
capable of  
growth and  
success.**

visit [hmhco.com/classroom-solutions/special-education](https://www.hmhco.com/classroom-solutions/special-education)  
to learn more.

JillE Literacy® is a trademark of Global Education Systems Limited, registered in New Zealand. Lexile® is a trademark of MetaMetrics, Inc., and is registered in the United States and abroad. Amira Learning® is a trademark of Amira Learning, Inc. HMH Reads®, Waggle®, Read 180®, System 44®, Saxon®, Math 180®, Rigby®, Houghton Mifflin Harcourt®, and HMH® are trademarks or registered trademarks of Houghton Mifflin Harcourt. © Houghton Mifflin Harcourt. All rights reserved. 05/22 WF1560789\_Updated 9.2023 PM\_LC

